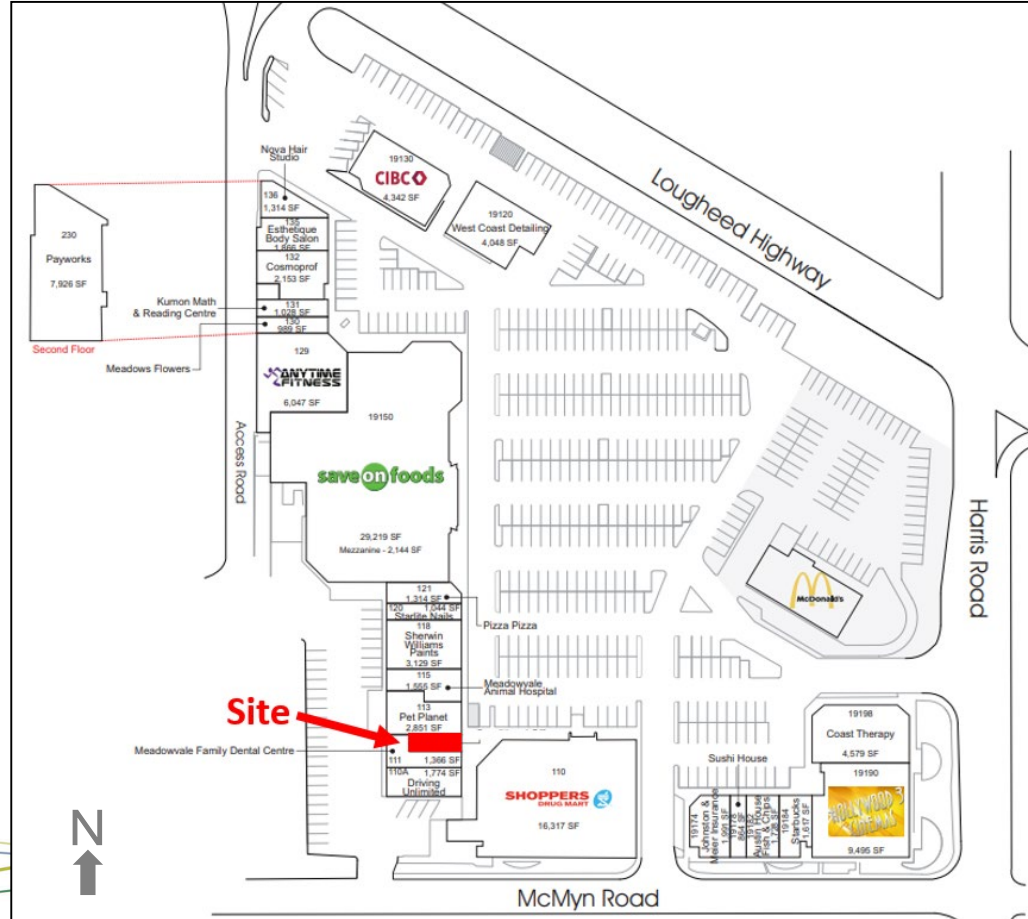




Rezoning Application New Cannabis Retail Store 112 – 19150 Loughheed Hwy

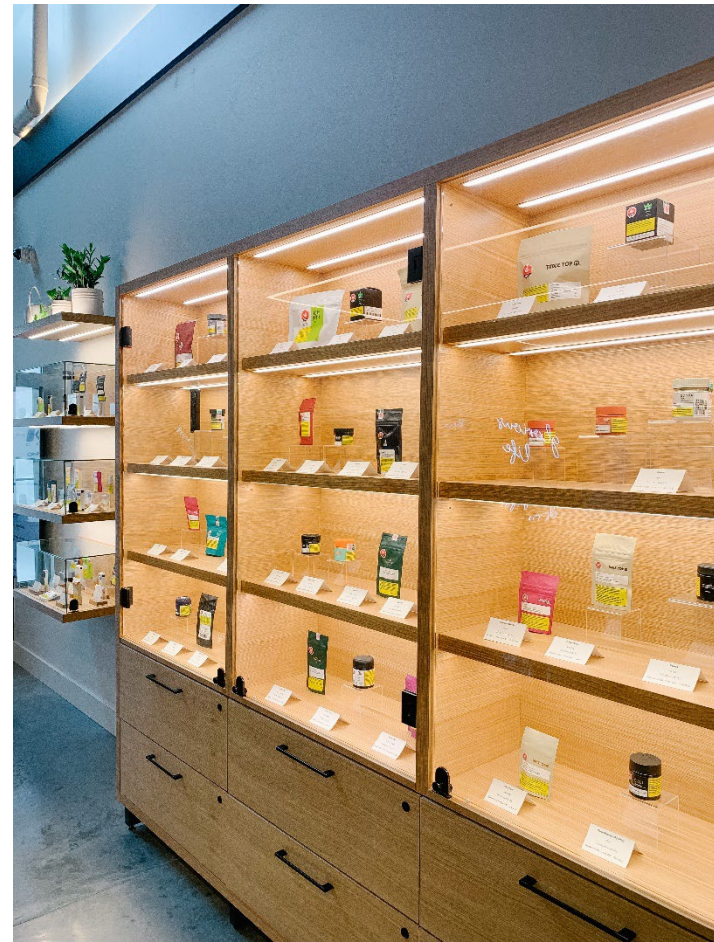
Economic Development Advisory Committee
Nov. 30, 2023

Site Location



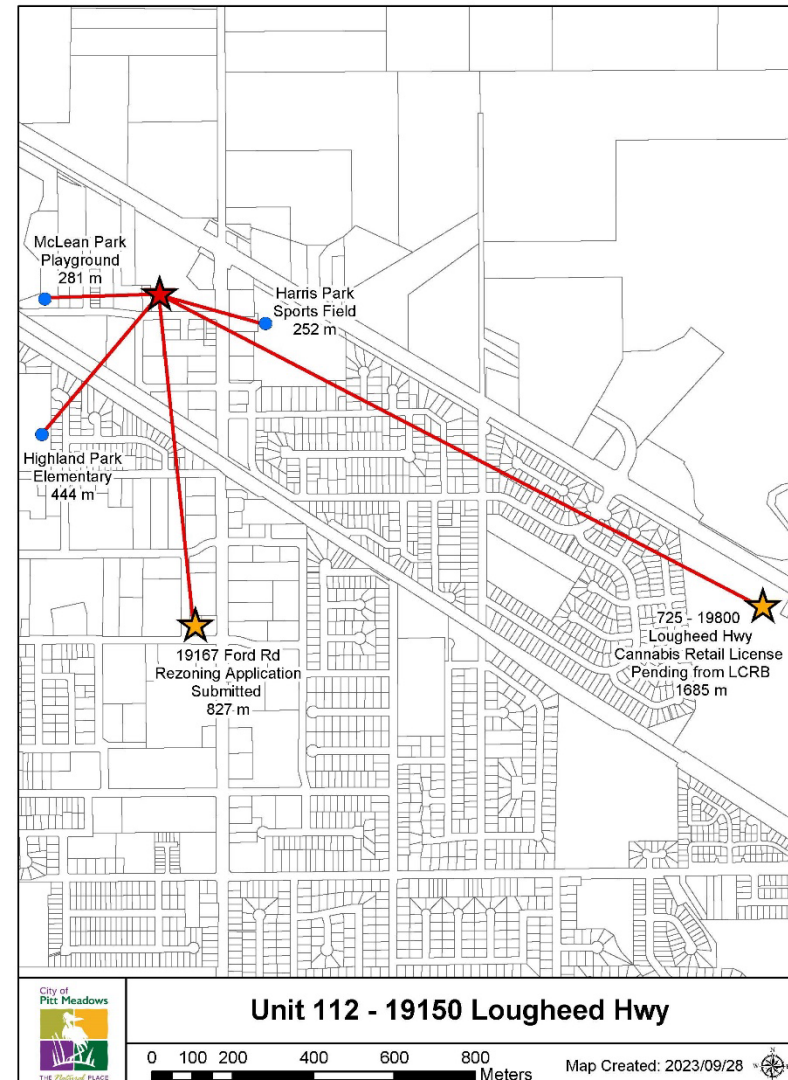
Design Precedent

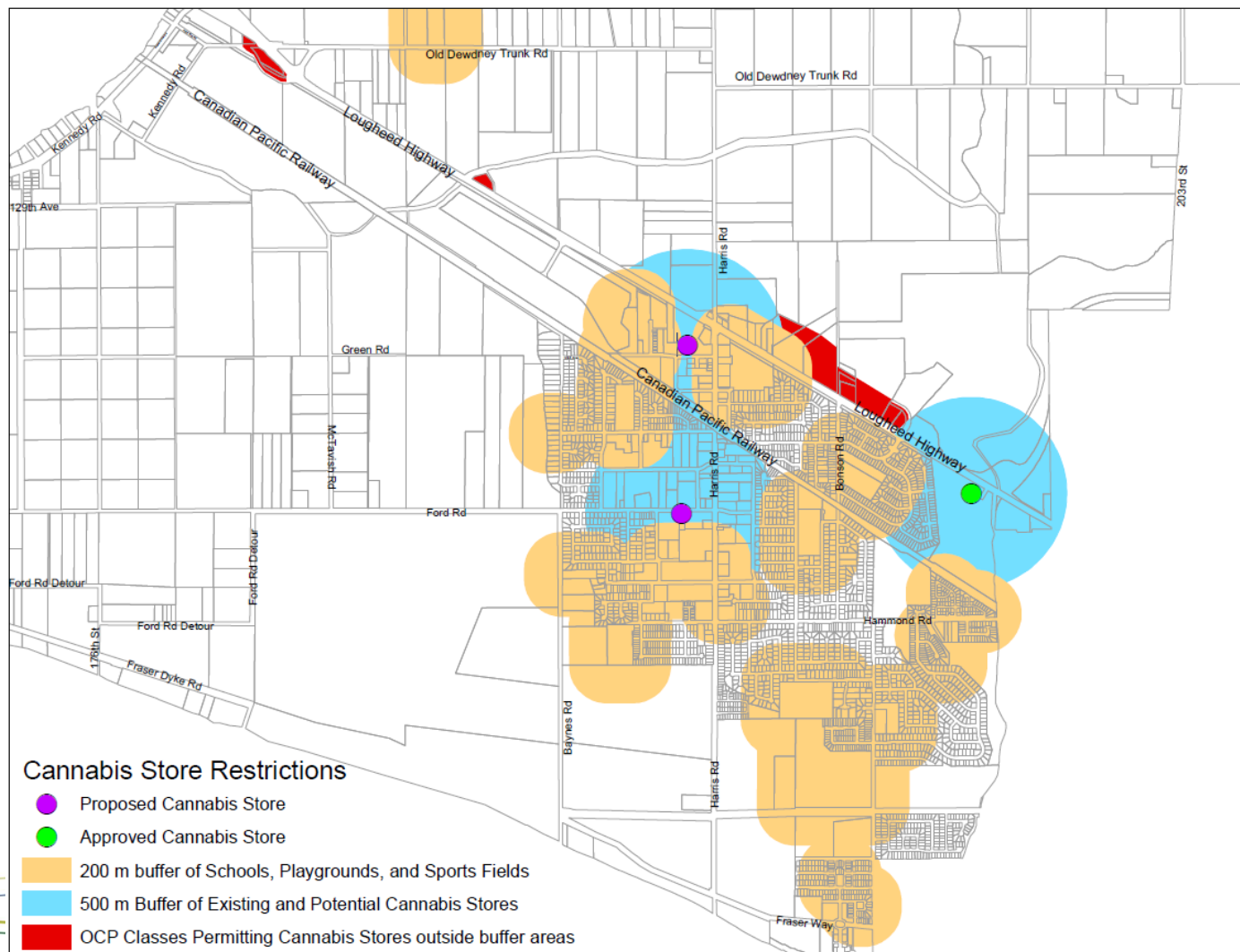




Cannabis Policy

- Commercial area
- Parking
- Transit accessible
- >500 m from cannabis retail
- >200 m from school, playground, sports field





Number of Cannabis Retail Stores

- Should there be a cap?
- Should the municipality influence the market by limiting this type of business?

Municipality	Max # of Stores	Current # of Stores
Langley Township	5	2
Maple Ridge	none	5
Port Coquitlam	none	5
Port Moody	5	3
New Westminster	6	5
Delta	6	6
White Rock	1	1

Recommendation: THAT EDAC:

- A. Endorses the rezoning application to permit a retail cannabis store at 112 – 19150 Loughheed Hwy; OR
- B. Other.