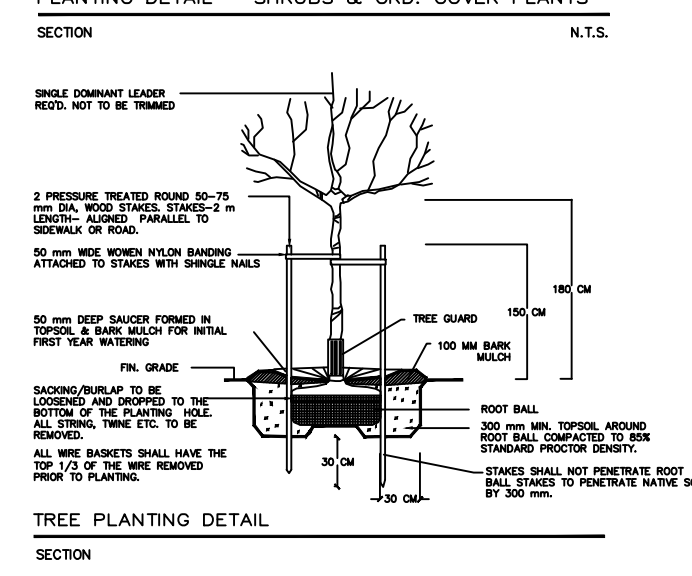
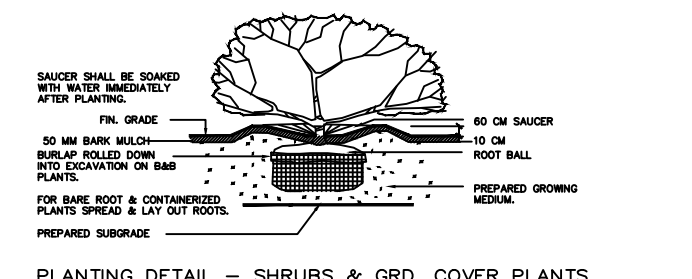
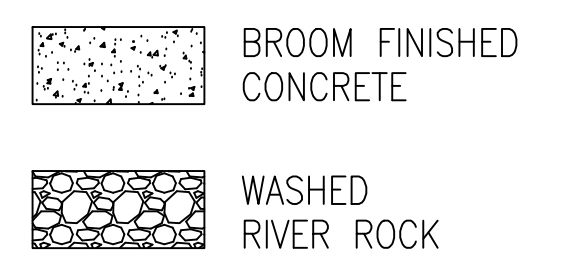
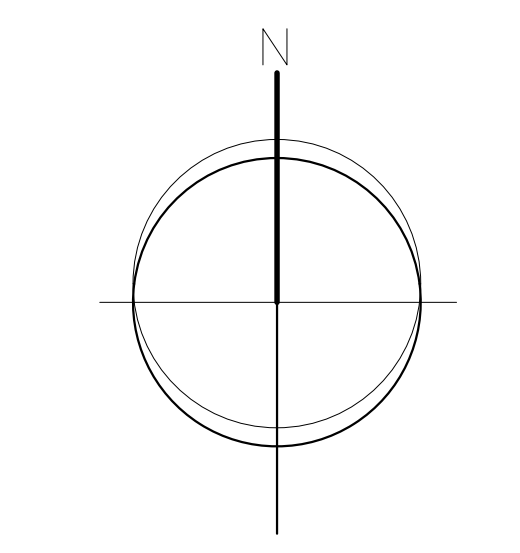
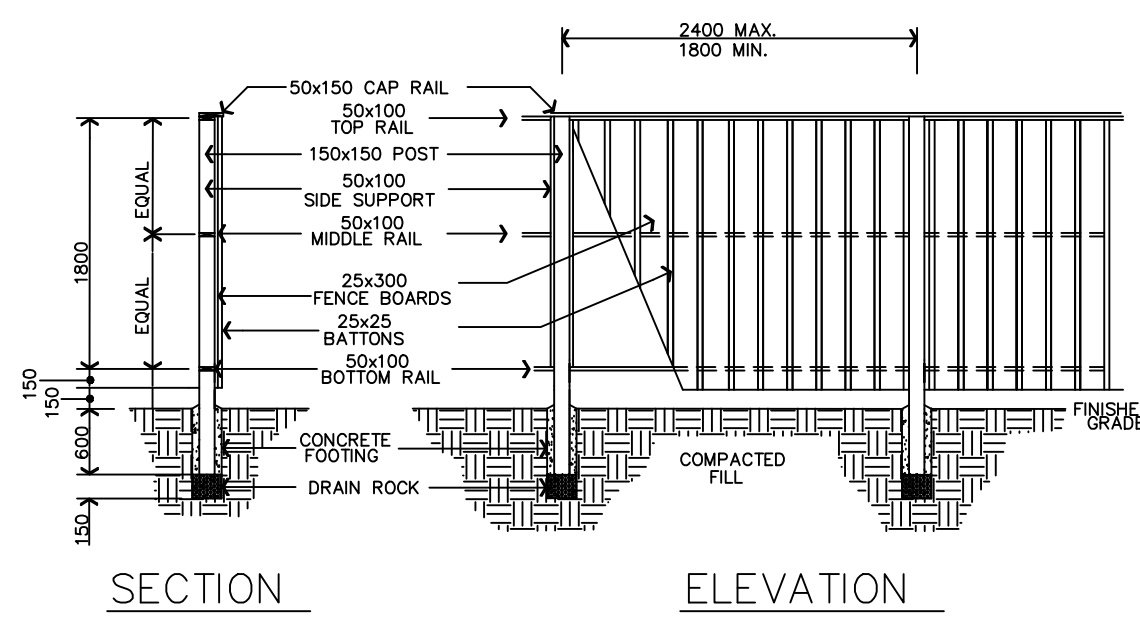


KEY	BOTANICAL NAME	PLANT LIST COMMON NAME	QTY.	SIZE	SPACING	REMARKS
○	QUERCUS ROBUR 'SKINNY GENES'	SKINNY GENES OAK	6	6 CM. CAL.	AS SHOWN	B. & B.
○	CORNUS FLORIDA 'RUBRUM'	RED FLOWERING DOGWOOD	3	6 CM. CAL.	AS SHOWN	B. & B.
○	ACER RUBRUM 'BOWHALL'	BOWHALL RED MAPLE	2	6 CM. CAL.	AS SHOWN	B. & B.
⊕	SARCOCOCCA HOOKERANA HUMILIS	HIMALAYAN SWEET BOX	8	#3 POT	70 CM. O.C.	
⊕	AZALEA JAPONICA 'HINO CRIMSON'	CRIMSON AZALEA	9	#3 POT	70 CM. O.C.	
○	BUXUS MACROPHYLLA 'WINTER GEM'	ASIAN BOXWOOD	89	#3 POT	45 CM. O.C.	
○	LUGUSTRUM JAPONICA TEXANUM	WAX LEAF PRIVET	37	#3 POT	90 CM. O.C.	
⊕	HOSTA (VARIOUS)	HOSTA	22	#3 POT	90 CM. O.C.	
⊕	SYRINGA VULGARIS 'MICHEL BUCHNER'	LILAC	6	#3 POT	90 CM. O.C.	
●	THUJA OCCIDENTALIS 'SMARAGD'	EMERALD ARBORVITAE	30	1.50 METERS	70 CM. O.C.	
⊕	LAVANDULA ANGUSTIFOLIA 'MUNSTEAD'	LAVENDER	44	#3 POT	45 CM. O.C.	
⊕	HEMEROCALLIS (HYBRID)	HYBRID DAY LILY	28	#3 POT	45 CM. O.C.	

- NOTES / GENERAL**
- PLANT SEEDS IN THE LIST ARE SPECIFIED ACCORDING TO BC LANDSCAPE STANDARD 'LATEST EDITION'. CONTAINER SIZES ARE SPECIFIED AS PER TORO STANDARD POT PLANT SIZE AND CONTAINER SIZE AND THE MINIMUM ACCEPTABLE SIZE. CLARIFY AND REVIEW PLANT MATERIAL AVAILABLE FOR OPTIMAL REVIEW BY 'LANDSCAPE ARCHITECT' PRIOR TO MAKING ANY SUBSTITUTIONS TO SPECIES, VARIETIES, CULTIVARS, OR TRADE NAMES. ALL SUBSTITUTIONS MUST OBTAIN WRITTEN APPROVAL FROM THE 'LANDSCAPE ARCHITECT' PRIOR TO MAKING ANY SUBSTITUTIONS TO SPECIES, VARIETIES, CULTIVARS, OR TRADE NAMES. ALL SUBSTITUTIONS MUST BE A MINIMUM OF THE WORKING DAYS PRIOR TO DELIVERY FOR REQUEST TO SUBSTITUTE. SUBSTITUTIONS ARE SUBJECT TO 'THE LANDSCAPE STANDARD'.
 - ALL PLANT MATERIAL MUST BE PROVIDED FROM CERTIFIED 'TREE FREE' MARKET. ALL PLANT MATERIAL MUST CONFORM TO THE LATEST EDITION OF THE 'BC LANDSCAPE STANDARD' THROUGHOUT THE PROJECT. ALL LANDSCAPING AND LANDSCAPE MATERIALS TO CONFORM TO THE LATEST EDITION OF THE 'BC LANDSCAPE STANDARD'.
 - MIN. GROUND COVER DEPTH OVER PREPARED SUBGRADE SHALL BE:
 - LAWN AREAS: 100 mm
 - GROUND COVER AREAS: 100 mm
 - SEED BEDS: 100 mm
 - TREE PITS: 300 mm AROUND ROOT BALL
 - GROUND MEDIA SHALL HAVE PHYSICAL AND CHEMICAL PROPERTIES AS DESCRIBED IN THE STANDARD FOR LIME 2 AND USE AS A MEDIA CREDIT FOR AREAS WHERE STRUCTURED MEDIA IS REQUIRED. THE MEDIA SHALL CONFORM TO THE REQUIREMENTS FOR LIME 2. APPLICABLE TESTING AND METHODS OF GROUND MEDIA COMPONENTS SHALL BE DONE OFF-SITE USING A MECHANIZED TESTING PROCEDURE. THE CONTRACTOR SHALL GUARANTEE THAT THE SIZE, QUANTITY FOR TESTING IS A REPRESENTATIVE SAMPLE TAKEN FROM THE SOIL THAT WILL BE USED AT THE SITE.
 - ON-SITE OR IMPORTED SOILS SHALL SATISFY THE REQUIREMENTS OF THE STANDARD FOR GROUND MEDIA. SOILS SHALL BE METALLICALLY FREE FROM SODIUM, WOOD AND WOOLY PLANT PARTS, WEEDS AND REPRODUCTION PARTS. IF MEDIA PLANT PARTS ARE FOUND, THESE MATERIALS SHALL BE REMOVED FROM THE SITE.
 - ALL PLANTING BEDS SHALL RECEIVE MIN. 50 MM DARK MULCH.
 - PLANT SPACES AND SPACING SHALL NOT BE SUBSTITUTED WITHOUT THE APPROVAL OF THE LANDSCAPE ARCHITECT.
 - THE CONTRACTOR SHALL GUARANTEE ALL MATERIALS AND WORKMANSHIP FOR A PERIOD OF ONE (1) YEAR FROM THE DATE OF FINAL ACCEPTANCE. ALL PLANT MATERIAL NOT SURVIVING OR IN POOR CONDITION DURING THE GUARANTEE PERIOD SHALL BE REPLACED BY THE CONTRACTOR AT NO EXTRA COST TO THE OWNER.
 - THE CONTRACTOR SHALL CLEAR AWAY FROM THE SITE ALL RUBBER AND IT ACCUMULATES AND SHALL, AT THE COMPLETION OF THE WORK, LEAVE THE WORK AND THE SITE THEREOF IN A CLEAN AND PRESCRIBED CONDITION, FREE FROM ALL OBSTRUCTIONS.



FENCE DETAIL
(DIMENSIONS IN mm)
N.T.S.



DATE: _____ REVISIONS: _____ NO. _____

C. KAVOLINAS & ASSOCIATES INC.
BCSLA CSLA
2462 JONQUIL COURT
ABBOTSFORD, B.C.
V3G 3E8
PHONE (604) 850-2368

CLIENT
BRAVECO ENTERPRISES INC.
ATTENTION: SUKHI SODHI
604-

TITLE
PLAN VIEW
LANDSCAPE PLAN
PROPOSED
6 UNIT MULTI-PLEX
11812 BLAKELY ROAD
PIT MEADOWS, B.C.

SCALE: 1:100 DATE: JAN/26
DRAFT: CHK'D
ENG: CHK'D
APPR'D: AS BUILT

PRINTED: _____ JOB No. _____
DRAWING No. _____
L-1