

# WELCOME TO I SEE PITT MEADOWS 2040 VISIONING EVENT

Thank you for coming and sharing your ideas  
for the future of our community!

TIME	WHAT'S HAPPENING
5:00 - 5:30	Poster gallery open for input
5:30 - 5:45	Presentation
5:45 - 8:00	Poster gallery open for input
6:00 - 8:00	Hosted table conversations
8:00	Close



City of  
**Pitt Meadows**  
THE *Natural* PLACE

# I SEE PITT MEADOWS 2040 WHO'S HERE?



please tell us a bit about yourself

## Why?

It helps us tell who we are hearing from, and if there are certain demographics missing we can try and encourage them to participate at other opportunities.

● Please put a sticky dot on the choices that best describe yourself.

### HOW YOUNG ARE YOU?

UNDER 19	
20-29	
30-39	
40-49	
50-59	
60-69	
70+	

### HOW LONG HAVE YOU LIVED IN PITT MEADOWS?

UNDER 5 YEARS	
6-10 YEARS	
11-20 YEARS	
20+ YEARS	



# VISION

## PITT MEADOWS

Adam Brückels

## What is an Official Community Plan?

The OCP is a Policy document that sets out the community's vision, goals and objectives for the next 20 years.

The last OCP was adopted in 2008. An updated OCP will provide a renewed vision for Pitt Meadows and the framework that will guide growth toward that vision.

It helps determine:







WHAT IS YOUR MOST  
**CRITICAL CONCERN**  
ABOUT PITT MEADOWS?

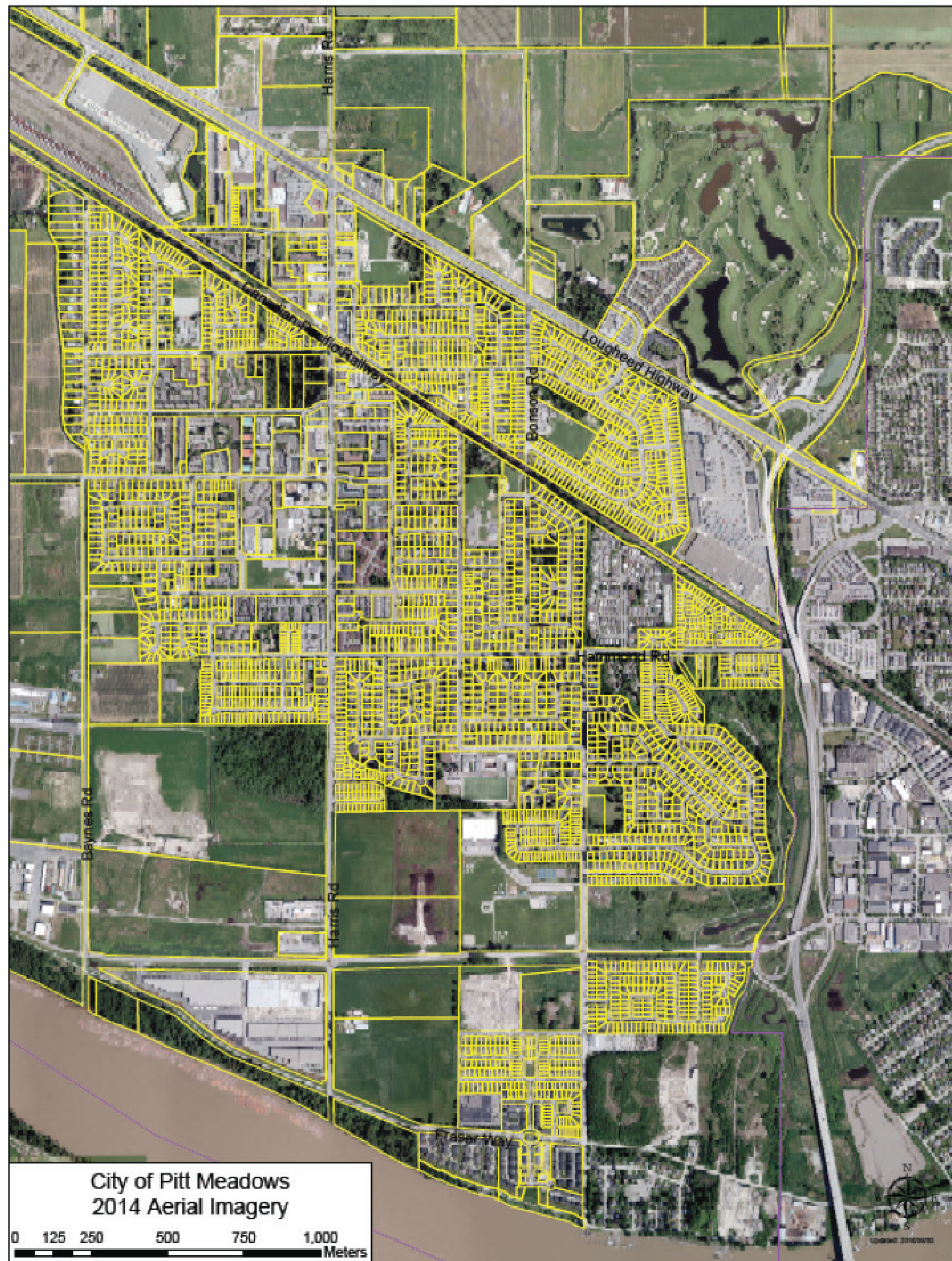
A large, empty speech bubble shape with a thin orange border, intended for a user to write their response.



# I SEE PITT MEADOWS NOW



- Put a sticky dot where you live. ★ Place a star on the places you love.
- 📌 Write down something you love to do and post it in that location.





# PITT MEADOWS VALUE TREE



What do you value the most about living, working  
or playing in Pitt Meadows?

*Write your response on a 'leaf' and place it on the tree.*



City of  
**Pitt Meadows**  
THE *Natural* PLACE



I SEE PITT MEADOWS  
**AS A PLACE  
WHERE...**

A collection of various speech bubble shapes for writing, including circles, rectangles, and cloud-like shapes, scattered across the page.



# ENVIRONMENT & NATURAL AREAS

Environment and natural areas consider the river and waterways; environmentally sensitive areas; biodiversity; air quality; and water quality and conservation.

**What do our environment and natural areas look like in 2040?**

**How important is it for Pitt Meadows to focus on environment & natural areas in the next 20 years?**



Not Important

Very Important





# FARMLAND, FOOD & AGRICULTURE

This topic covers protecting farmland for food production; access to local and healthy food; sustainable farming practices; and reduction of food waste.

**What does our farmland, food and agriculture look like in 2040?**

**How important is it for Pitt Meadows to focus on farmland, food and agriculture in the next 20 years?**



Not Important

Very Important





# PARKS, RECREATION & PUBLIC REALM

This topic covers protecting farmland for food production; access to local and healthy food; sustainable farming practices; and reduction of food waste.

**What do our parks, recreation and public realm look like in 2040?**

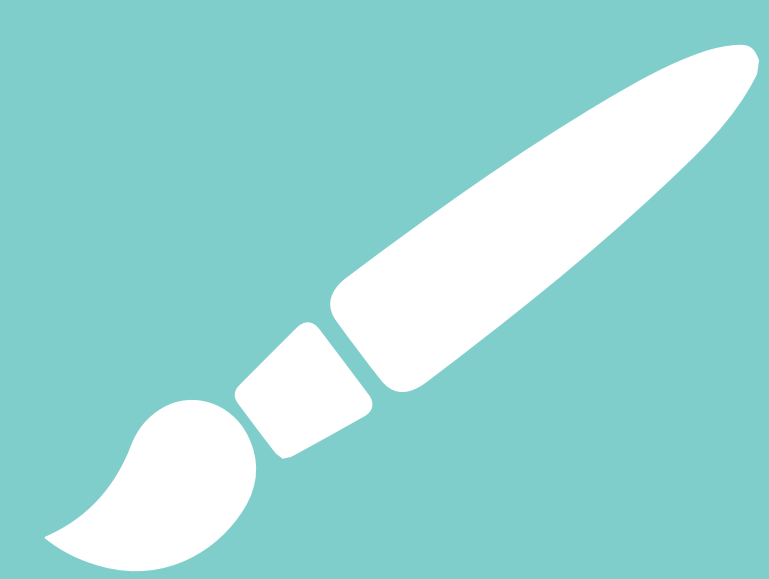
**How important is it for Pitt Meadows to focus on parks, recreation and public realm in the next 20 years?**



Not Important

Very Important





# ARTS, CULTURE, HERITAGE AND EDUCATION

Arts, Culture, Heritage and Education includes public art; our education system; lifelong learning; First Nations culture and heritage; and how arts, culture and heritage contribute to our local economy.

**What do arts, culture, heritage and education look like in 2040?**

**How important is it for Pitt Meadows to focus on arts, culture, heritage and education in the next 20 years?**



Not Important

Very Important



# TRANSPORTATION

Transportation in Pitt Meadows considers initiatives to reduce traffic; public transit; walking and cycling networks; rail and air transport; and minimizing environmental impact from our transportation system.

**What does transportation look like in 2040?**

**How important is it for Pitt Meadows to focus on transportation in the next 20 years?**



Not Important

Very Important





# ENERGY, WATER AND WASTE

This topic includes energy efficiency and conservation; renewable energy; reducing greenhouse gases; water supply; sewers; stormwater management; water conservation; and waste reduction, diversion and composting.

**What do our water and waste systems look like in 2040?**

**How important is it for Pitt Meadows to focus on Energy, Water and Waste in the next 20 years?**



Not Important

Very Important



# COMMUNITY WELLBEING

Community wellbeing includes our physical, mental and spiritual health; social connections, inclusion and safety; and affordability.

**What does community wellbeing look like in 2040?**

**How important is it for Pitt Meadows to focus on community wellbeing in the next 20 years?**



Not Important

Very Important





# EMPLOYMENT AND ECONOMY

Employment and economy focuses on economic diversity; vibrant local businesses; skilled workforce; tourism; innovation; and attraction and retention.

**What does employment and our economy look like in 2040?**

**How important is it for Pitt Meadows to focus on employment and economy in the next 20 years?**



Not Important

Very Important





# NEIGHBOURHOODS, HOUSING AND LAND USE

Neighbourhoods and land use considers neighbourhood character and connectivity; access to amenities; sustainable use of land; and housing diversity and affordability.

**What do our neighbourhoods, housing and land use look like in 2040?**

**How important is it for Pitt Meadows to focus on neighbourhoods, housing and land use in the next 20 years?**



Not Important

Very Important