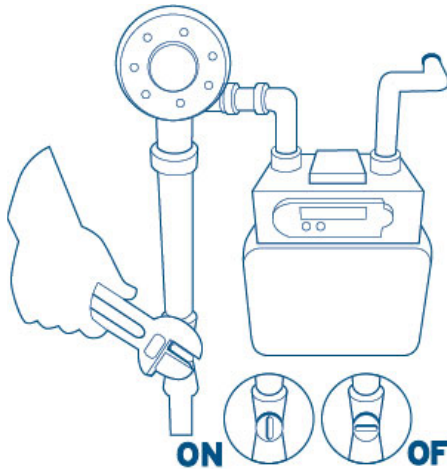


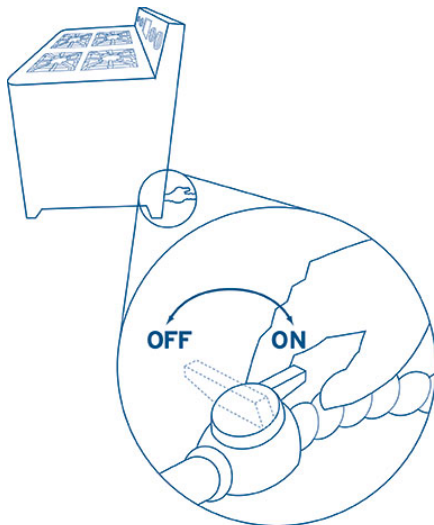


# EMERGENCY GAS

## APPLIANCE PREPARATION



The gas supply shut-off valve is located where your gas service connects to your meter. To close, turn the valve a quarter turn with a 12" to 16" adjustable wrench or shut-off tool.



Turn valve so it is at a right angle to the pipe.

### PREPARE YOUR HOME

- Securely strap your hot water tank. This is the most important preparation you can make, as it will keep the water line and gas line from breaking and ensure a source of water. The BC Building and Plumbing Codes now require it, and contractors who install and service water heaters can do for you.
- Anchor other gas appliances wherever possible. Use flexible metal connectors to connect appliances to rigid gas piping. Securing all your gas appliances properly reduces the need for a seismic shut-off valve.
- Always keep the area around gas appliances clear of combustible materials including paper, paints/solvents, laundry, propane cylinders, barbecues and gasoline-powered lawnmowers and vehicles.
- Locate and learn how to shut off your water, gas and electricity. Designate a 12 to 16-inch adjustable wrench for emergency shut-off of your gas supply, and make sure everyone knows where it is and how to use it.
- Know where the shut-off valve for each appliance is and how to use it – but don't actually turn it off unless there is an emergency.
- Check your insurance policy. A basic homeowner's insurance policy does not cover damage caused by an earthquake. Many people appreciate the peace of mind of adding earthquake coverage to their policy.



[www.pittmeadows.bc.ca](http://www.pittmeadows.bc.ca)



[www.facebook.com/pittmeadows](http://www.facebook.com/pittmeadows)



[@citypittmeadows](https://twitter.com/citypittmeadows)



Emergency Preparedness Program



City of  
**Pitt Meadows**  
THE *Natural* PLACE

#150719v1