



Maple Ridge Pitt Meadows Area Transport Plan & Lougheed Hwy B-Line Upcoming Consultation

Pitt Meadows Council Presentation
March 20, 2018

Purpose and Context

TransLink is working with your staff to get people moving:

- Major Road Network and cycling infrastructure investments
- Additional West Coast Express capacity
- Regional Transportation Strategy Update
- Mayor's meeting with TransLink, Port of Vancouver, MoTI

Today's presentation is about:

**Lougheed Hwy B-Line
Maple Ridge Pitt Meadows
Area Transport Plan**

- Consult council about proposed B-Line & ATP
- Request input on proposed consultation approach
 - Methods
 - Timing

Two Projects, One Consultation

Area Transport Plan	Lougheed Hwy B-Line
Forward-looking plan for all transport modes in Maple Ridge and Pitt Meadows	Rapid bus corridor from Coquitlam to Haney Place
Consulting the public in April-May 2018	Consulting the public in April-May 2018
Plan to be adopted in 2019 ; implemented over longer term	Opens in 2019

Objective of Area Transport Plans

- Partner and engage to understand local needs
- Define sub-regional priorities
- Guide future investment

Emerging themes so far:

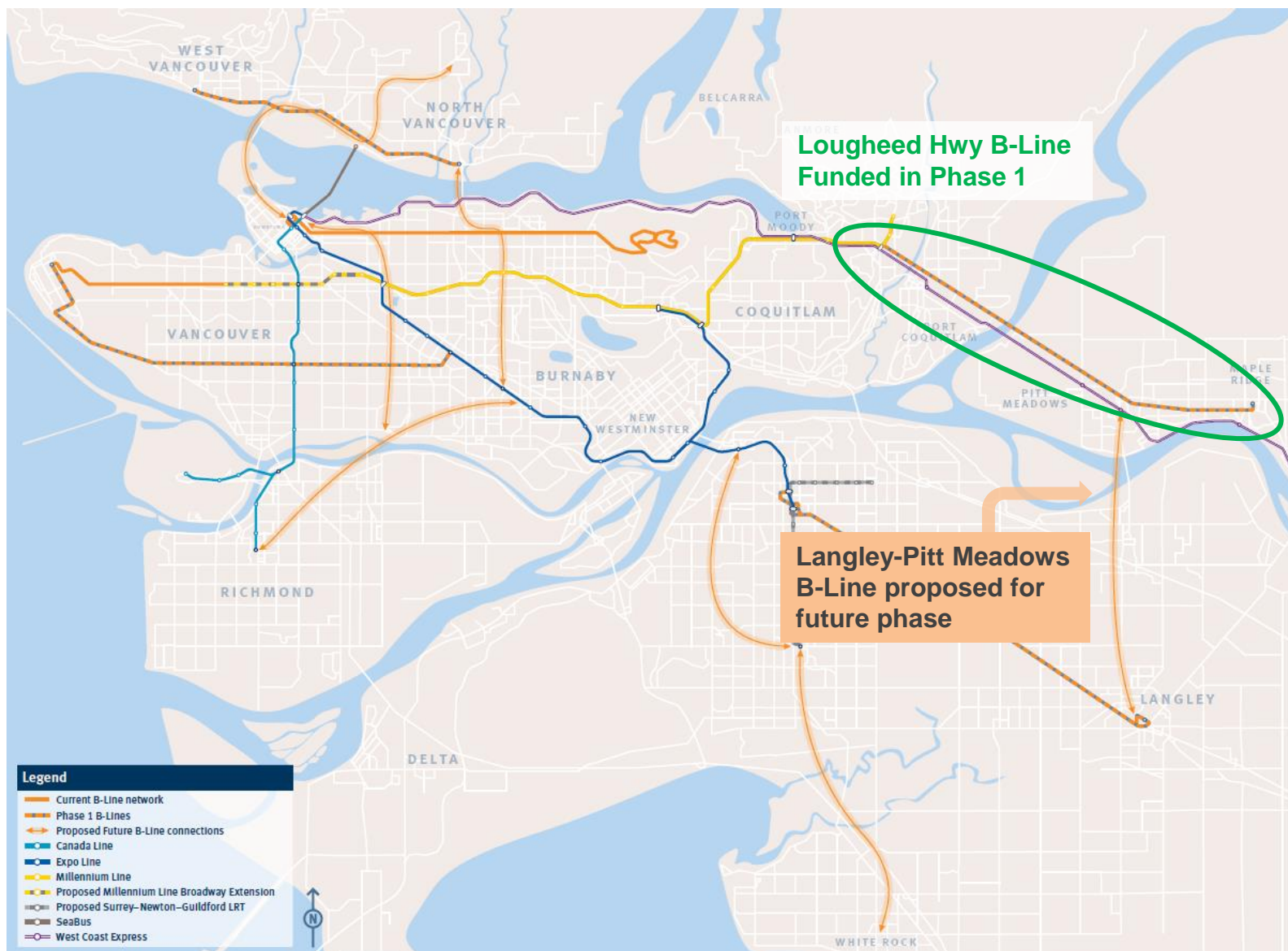
- Improve transit directness and span of service
- Connect new development areas, especially employment and residential areas
- Improve regional bicycle and pedestrian connections to transit
- Opportunity to improve safety and access through roadway network changes

ATP Project Overview

Key Components:

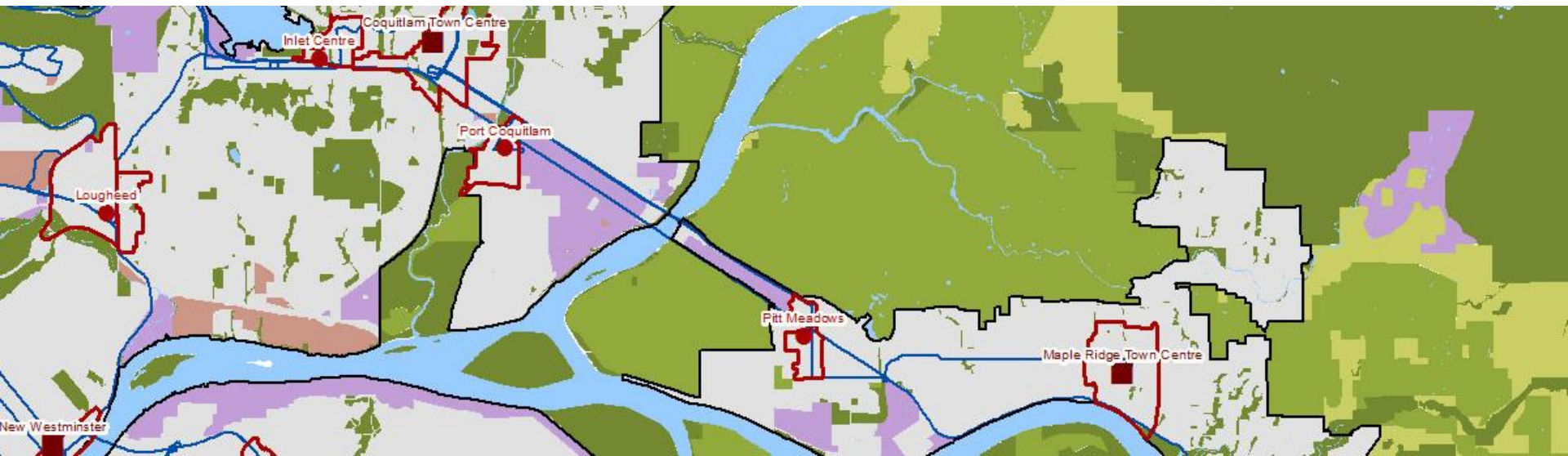
1. Transit
2. Long-term Vision for Rapid Transit Corridor (2030-2045)
3. Regional cycling
4. Pedestrian access to transit
5. Regional road connections

'B-Line or Better' in the Mayors' 10-Year Vision



Importance of B-Line Corridor

- **Driving the Lougheed Corridor's growth**
 - 27,000 **residents** live near B-Line stops
 - 22,000 **jobs** located near B-Line stops
 - Population along B-Line **expected to grow 102% by 2045**
- **Driving transit ridership**
 - Similar to 96 B-Line in Surrey, which has seen ridership growth of 85% in just 5 years
- **Connecting Pitt Meadows & the region**
 - 86,000 more people can reach **Meadowvale Shopping Ctr** within 60 min
- **Shaping the future of transit in Pitt Meadows**
 - B-Line corridor to **continuously improve** over the long term



What is the proposed 'B-Line or Better' service?



Fast and Reliable

Stops are spaced ~1 km apart

All door boarding

Streets are redesigned to make buses faster

High-capacity articulated buses

Frequent

Every 10 minutes in peak times

Every 15 minutes at other times

Available all day

From 5 a.m. to midnight

Easy to find

Buses and stops have a different look

Stops have next bus digital signage

Route information inside buses

Proposed Lougheed Hwy B-Line

30% faster

40 minutes from Haney Place to Coquitlam Central

33% less waiting during peak times

Comes every 10 minutes in peak

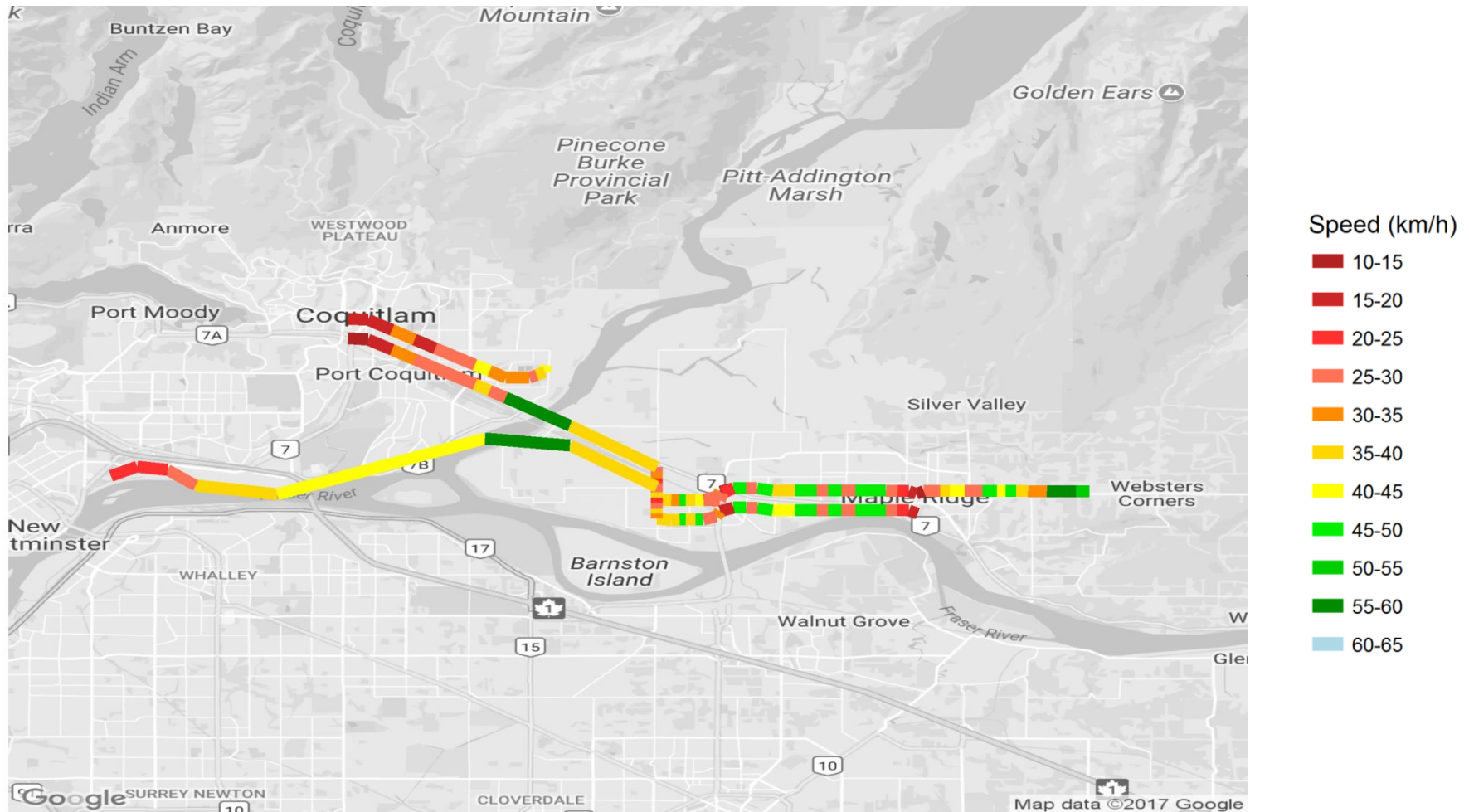
225% more capacity across Pitt River Bridge

Will accommodate significant ridership growth

Proposed Stops



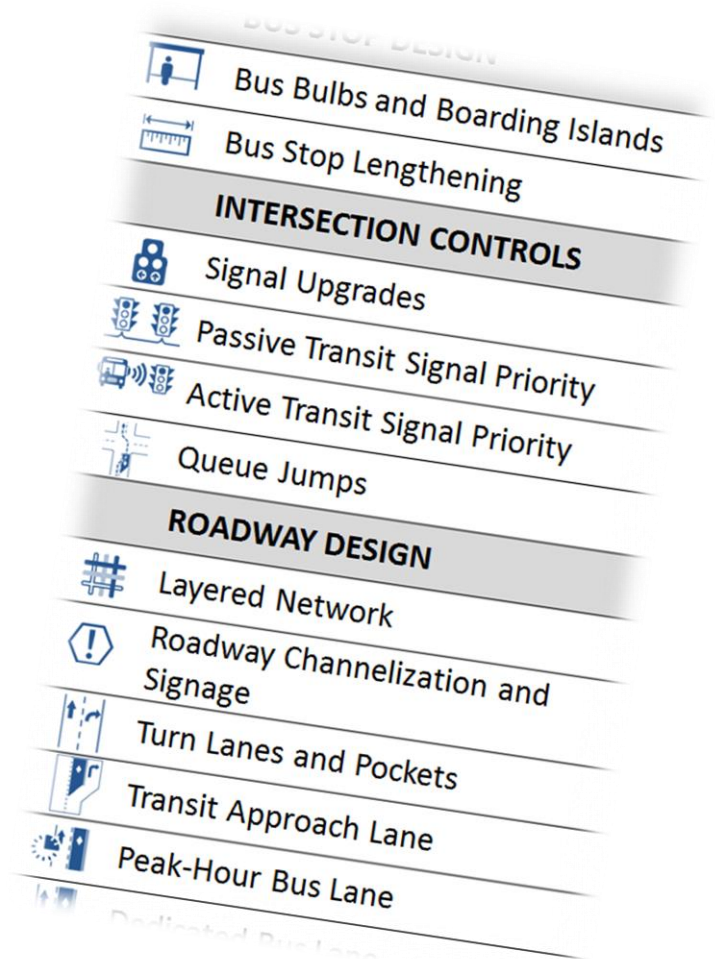
Speed & Reliability Current Situation: Lougheed Hwy Corridor



Westbound weekday average speed (excluding dwell time) of routes 171, 701, and 791.

Making the B-Line Faster and More Reliable

- Buses slow and unreliable at choke points
- Street modifications on municipal roads are essential to B-Line success
 - TransLink funds are available to implement changes
 - TL will keep working with municipalities on progressive future improvements
- What tools does the community want to see implemented?
 - Quick improvements
 - Longer-range investments



B-Line Alignment in Pitt Meadows

- **TransLink reviewed potential B-Line service on Harris and Hammond**
 - Adds ~10 minutes to each trip, but sometimes much more
 - Congestion at signals and railway crossings create significant variability in travel time
 - Not consistent with region-wide B-Line concept
- **B-Line project will improve mobility for Pitt Meadows**
 - Will reduce crowding on existing bus routes
 - Transit priority features will improve speed/reliability of 701 & 791
 - Potential future connection to Meadowtown
- **ATP will further improve bus connections in Pitt Meadows**

What are we consulting on?

- **Proposed B-Line & stop locations**
 - At major destinations & connection points
- **B-Line-related changes to local service**
 - **Route 595** to be extended to 203rd Street to enable connections between B-Line and Langley
- **Support for B-Line speed and reliability measures**
- **Issues and Opportunities for ATP, including:**
 - Transit
 - Pedestrian Access to Transit
 - Regional cycling connections
 - Regional road connections
 - Long-term vision for rapid transit

Consultation Promotion and Events

Creating Awareness

- Targeted postcards
- Digital and local newspaper ad buys
 - Maple Ridge-Pitt Meadows News
 - Tri-City News
- TransLink's Buzzer Blog, Facebook, Twitter and Instagram
- Municipal social media feeds
- Bus & SkyTrain ads
- Contacting targeted community groups
 - Elders groups
 - Business Improvement Districts
 - Chamber of Commerce
 - Community Associations
- Sending material to community centres for distribution

Public Pop-Ups

April 21

- Maple Ridge Earth Day

May 7

- Haney Place

May 9

- Pitt Meadows WCE Station

May 10

- Coquitlam Central Station

May 12

- May Day, Port Coquitlam

Consultation Methods

- Online survey
- Paper survey by request
- Focused strategic engagement
- Stakeholder engagement
 - HUB, MoTI, Port, etc.



Timelines

ATP

B-Line

Council Outreach

	ATP	B-Line		Council Outreach
		Plan Approval	Q4 2016	
		Planning & Data Collection (with municipal staff)	Q1 2017	
			Q2	
			Q3	
			Q4	
Q1 2018	Needs Assessment		Q1 2018	Council Presentations – we are here
Q2	Consultation Summarize Issues & Opportunities	Consultation Bus service and priority elements	Q2	Report back to Council on Consultation 1
	Refinement	Refinement		
Q3	Develop & Evaluate Strategies	Design (with municipal staff)	Q3	
Q4			Q4	
Q1 2019	Consultation Proposed strategies	Consultation (if necessary) Transit priority interventions	Q1 2019	Further Council engagement
Q2	Finalize Strategies	Construction	Q2	
Q3			Q3	
Q4	Adopt ATP	Launch	Q4	Council ATP Endorsement

Questions?

- Q & A now
- Contact Pitt Meadows Steering Committee representative:
 - Forrest Smith, Director of Engineering & Operations



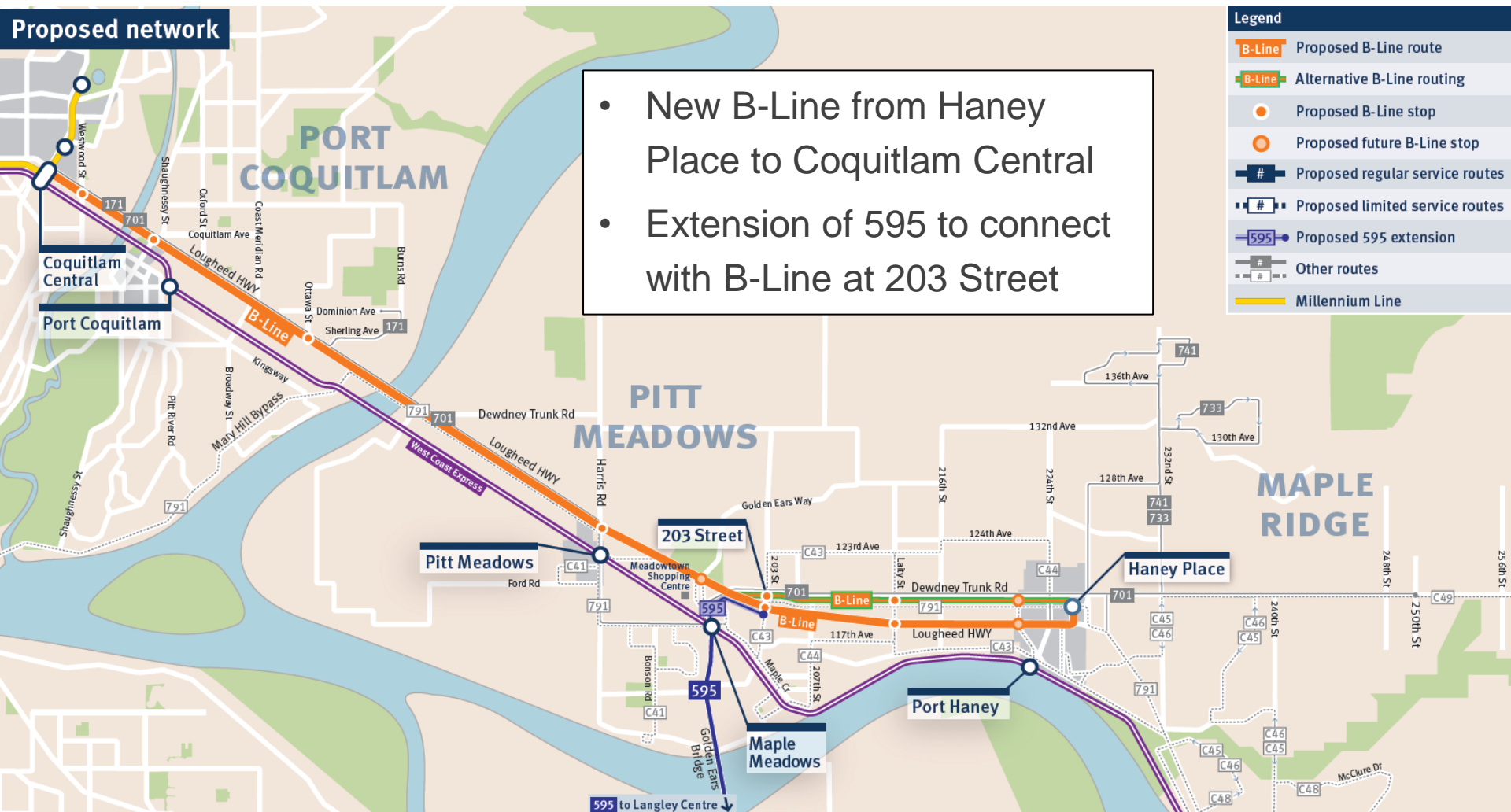


Resource Slides

New B-Line Hours & Frequency

		Current Route 701	Proposed Lougheed Hwy B-Line
FREQUENCY (mins)	Peak	15	10
	Off-Peak	15	15
	Night	30	15
SPAN	Start	6:00 a.m.	5:00 a.m.
	End	1:00 a.m.	Midnight
PEAK HOURLY CAPACITY		200 psgrs per hour per direction	450 psgrs per hour per direction
PEAK TRAVEL TIME	Haney Place- Coquitlam Central	55 minutes	40 minutes

Bus service proposed for public consultation:



B-Line Alignment in Maple Ridge

- **B-Line corridor along Lougheed Hwy in Maple Ridge**
 - Stops on Lougheed may not be deliverable by opening day
 - Utility relocations, driveway closures, and potential expropriation will extend timeline
- **If necessary, opening day alignment along Dewdney Trunk Road**
 - Stops already available and in use
 - Serves many of the same destinations as Lougheed
 - Travel time to Haney Place is the same as or better than Lougheed Hwy alignment

