



Construction and Demolition

WASTE REDUCTION AND RECYCLING TOOLKIT

A guide for the building and construction industry

October 2020

Disclaimer

Copyright to this publication is owned by the Metro Vancouver Regional District (“Metro Vancouver”). Permission is granted to produce or reproduce this publication, or any substantial part of it, for personal, non-commercial, educational and informational purposes only, provided that the publication is not modified or altered and provided that this copyright notice and disclaimer is included in any such production or reproduction. Otherwise, no part of this publication may be reproduced except in accordance with the provisions of the Copyright Act, as amended or replaced from time to time.

While the information in this publication is believed to be accurate, this publication and all of the information contained in it are provided “as is” without warranty of any kind, whether express or implied. All implied warranties, including, without limitation, implied warranties of merchantability and fitness for a particular purpose, are expressly disclaimed by Metro Vancouver.

The material provided in this publication is intended for educational and informational purposes only. This publication is not intended to endorse or recommend any particular product, material or service provider nor is it intended as a substitute for engineering, legal or other professional advice. Such advice should be sought from qualified professionals.

The toolkit is not a legal document and should not be considered a substitute for governing legislation and regulation. This toolkit is a living document and may be updated periodically.

4730 Kingsway, Burnaby, BC, V5H 0C6
www.metrovancouver.org

Oct 2020

Front Cover: Unbuilders

Contents

Introduction	4
Municipal Construction & Demolition Recycling Requirements	7
Information on Hazardous Waste Management	8
Deconstruction and Salvage	10
Recycling	18
Bibliography	22
Directory – Recycling Depots & Facilities	24
Directory – Service Providers	35

Introduction

Thank you for using Metro Vancouver’s Construction and Demolition (C&D) Waste Reduction and Recycling Toolkit.

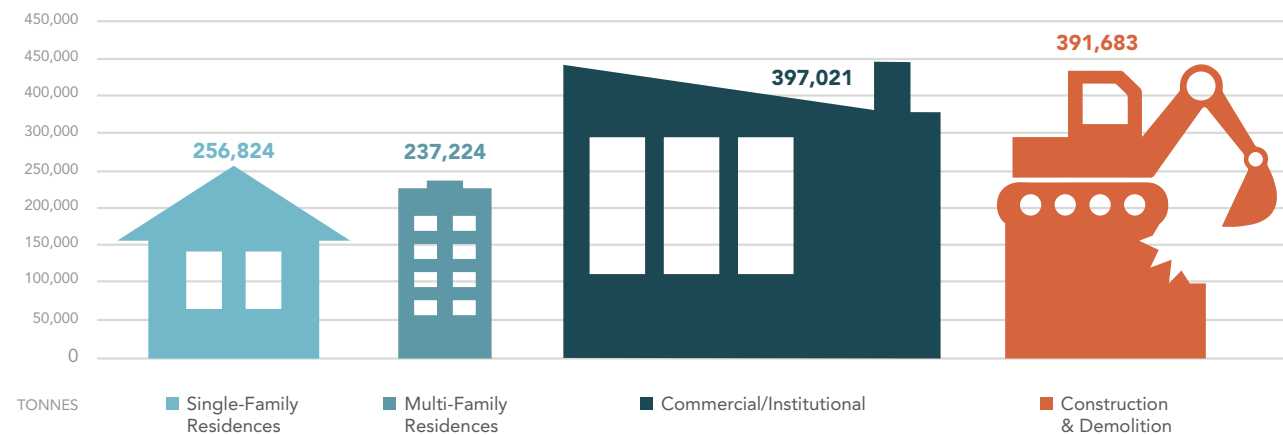
This toolkit contains a reference guide and directory to help contractors, project managers, and homeowners learn more about:

- Demolition waste recycling requirements in different municipalities throughout Metro Vancouver
- Resources for the management of hazardous materials commonly found in construction sites
- Alternatives to traditional demolition

- Ways to reuse and recycle leftover building materials
- C&D facilities, recycling depots, and service providers in Metro Vancouver

Can’t find a recycler for a specific material? Visit [Metro Vancouver Recycles](#) or call 604-RECYCLE (604-732-9253).

WASTE DISPOSED IN METRO VANCOUVER BY SECTOR - 2018



WHY C&D WASTE MATTERS

Waste from the C&D sector represents about one third of waste sent to landfills in Metro Vancouver¹.

Wood and plastic are the largest components of the C&D waste disposed in the region (approximately 60% and 12% respectively)².

By recycling and reusing building materials we keep them out of the waste stream and help improve our air quality, land, and water supply.



1 - 2018 Solid Waste Management Annual Summary
 2 - 2018 Construction and Demolition Waste Composition Study



Barn deconstruction
CREDIT: UNBUILDERS

Municipal C&D Recycling Requirements

Metro Vancouver municipalities each have their own bylaws and procedures that govern construction and demolition activities, including salvage and recycling requirements.

Some municipalities in Metro Vancouver have implemented regulatory measures to encourage recycling and reuse of building materials. If you want to demolish an existing home, you may be required to submit a waste management plan as part of your demolition permit application and submit a compliance report when work is complete.

Learn more about demolition waste recycling requirements in your municipality by following the links below or contacting your local building permit department.

DID YOU KNOW?

Many homes being demolished are structurally sound and do not have fire or water damage. Deconstruction provides an opportunity to salvage old growth lumber from trees that were up to 2,000 years old³.

In a typical home deconstruction, up to 25% of materials can be reused and up to 70% of materials can be recycled⁴.

Municipalities with demolition waste recycling requirements

MUNICIPALITY	WEBLINK	PHONE	ADDITIONAL RESOURCES
City of Coquitlam	Building Permits	604-927-3441	Demolition Permit Brochure
City of New Westminster	Demolition Permits	604-527-4580	Demolition Permit guidelines and application form
City of North Vancouver	Building Permit	604-983-7355	Demolition Waste Checklist
City of Port Moody	Building Permit	604-469-4534	Demolition Permit Process
City of Richmond	Building Permit and Renovating	604-276-4118	
City of Surrey	Demolition, Moving or Salvage Program	604-591-4366	Demolition & Construction Waste Brochure
City of Vancouver	Demolition Recycling Requirements	604-873-7611	
District of West Vancouver	Building Permits	604-925-7040	

³ Building Deconstruction Capacity in BC: Opportunities for a Changing Industry. Presentation by Unbuilders

⁴ Deconstruction & Building Materials Reuse

Hazardous Waste Management

Hazardous materials should be identified early in the process to protect workers and allow for proper removal and disposal. Before any demolition work begins, a hazardous materials survey must be completed by a qualified person to:

- Protect the health and safety of workers, the community, and the environment
- Comply with BC Occupational Health and Safety Regulation

For more information, go to [WorkSafeBC-OHS Regulation Part 6: Substance Specific Requirements](#)⁵.

Construction and demolition wastes, especially those that contain hazardous materials, should never be dumped onto the street, ground, or into the sewer system.

Hazardous waste materials must be properly managed and disposed of in compliance with the [Hazardous Waste Regulation](#) and [BC Environmental Management Act](#).

Some municipalities in Metro Vancouver require that the main applicant submits a Hazardous Materials Report before a demolition permit is issued. Contact your municipality to learn more about specific requirements of hazardous waste management for your project.



Hazardous Materials
CREDIT: BROADWAY YOUTH RESOURCE CENTRE

DID YOU KNOW?

Deconstruction increases opportunities to discover and remove hidden hazardous materials during the hand disassembly⁶.

Examples of hazardous materials commonly found at C&D sites

MATERIAL	POSSIBLE SOURCES
Asbestos	Roof shingles, pipe insulation, pipe tape, ceiling tile, drywall joint compound, vinyl sheet flooring, vinyl tiles, lag pipe, stucco, insulation asbestos board, and linoleum.
Abandoned chemicals	Paint, solvents, oils, cleaning products, flammable and combustible substances like gasoline, pesticides, herbicides, and medications. Underground storage tanks for heating and cooling systems.
Freon	Cooling equipment.
Formaldehyde	Glues in particleboard or interior-grade plywood. Some glues and varnishes release formaldehyde gas when they are heated.
Isocyanates	Spray foam insulation in walls and rooms.
Lead	Fences, porches, sidings, walls, doors, ceilings and window sills, stairs, banisters, painted built-ins (bookcases, shelves), and paint or solvent wastes abandoned in the building prior to and during occupancy.
Mercury	Switches, toggles, transformers, high-intensity discharge lamps, and thermostats.
Silica	Concrete, concrete block, cement, mortar, masonry, tiles, brick, refractory brick, composite products such as Hardiplank, granite, sand, fill dirt, top soil, asphalt containing rock or stone, and abrasive used for blasting.

USED GYPSUM DISPOSAL PROGRAM

A special program has been created for residents to dispose of a small amount of used gypsum at Metro Vancouver transfer stations and the Vancouver Landfill. The program is limited to a maximum of 10 x 10 kg bags per visit, 5 visits per year.

For more information go to [Metro Vancouver Used Gypsum Disposal Instructions](#)

Call 604-RECYCLE (604-732-9253) for information on hazardous waste management contractors and laboratory testing services in your area.

⁵ Occupational Health and Safety Regulation

⁶ Deconstruction Program Status Report – May 2017, City of Portland

Deconstruction and Salvage

What are the alternatives to demolition?

If your site has an existing structure that needs to be removed, consider these alternatives:

Adaptive Reuse and House Moving

- Building reuse helps preserve historical architecture, reduce waste, and offset consumption of raw materials required for new construction.

- An old building can be reused for a different purpose than it was designed. A successful adaptive reuse project requires collaboration and planning between developers and municipalities.

Please email heritage@gov.bc.ca if you have questions about adapting or restoring a heritage building. For more information and examples of projects where older buildings in British Columbia were restored, visit Rehabilitated Heritage Buildings.

- Alternatively, if a building is no longer needed at the site it sits on, it could still be structurally sound and used at another location.

- A house moving contractor can help you determine if building relocation is appropriate for your project.



House moving
CREDIT: NICKEL BROTHERS HOUSE MOVING



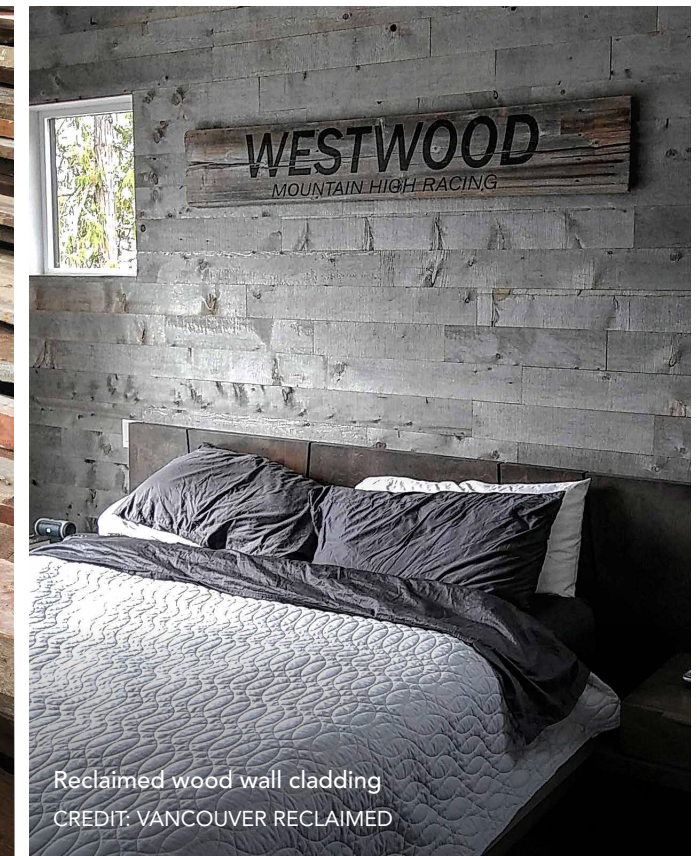
Deconstruction of single family home
CREDIT: UNBUILDERS

Deconstruction

- Compared to traditional demolition, deconstruction salvages and redistributes building materials, diverting up to 95% for reuse or recycling. Deconstruction is also quieter and reduces dust generation.
- If a building can't be restored or relocated, consider deconstructing the structure.
- A deconstruction contractor can help you determine if full deconstruction is suitable for your project.



Salvaged dimensional lumber



Reclaimed wood wall cladding
CREDIT: VANCOUVER RECLAIMED

Salvage

- Salvaged building materials can be reused onsite, taken to used building materials stores, donated to non-profit organizations, or sold directly to local builders.
- If full deconstruction is not viable, you can recover architectural pieces before demolition.
- An appraiser can help you identify materials that can be recovered and estimate the value of items that can be donated to charity.

Reuse of building materials

- You can use reclaimed building materials to add character to your home through the use of heritage historic materials, support local small businesses, and reduce your project's carbon footprint.
- Reclaimed lumber is highly valued and can be reused as flooring, wall cladding, or to manufacture furniture.
- Visit a used building materials store to explore your options.

EXAMPLES OF REUSABLE MATERIALS

Appliances (good working order, clean)

Architectural details
(columns, mantels, mouldings)

Barn wood boards & fences

Bricks, stone & cinderblock

Cabinets

Doors

Hardwood flooring

Lighting and electrical equipment

Lumber

Mirrors (framed)

Plumbing fixtures & fittings (faucets, sinks,
bathtubs, and bathroom accessories)

Railings and gates

Windows*

* Check energy requirements in your municipality

DID YOU KNOW?

Between 60 and 80 trees can be saved when a home is relocated rather than demolished. In addition, home relocation can save up to 120 trees from being used in construction of an average new home⁷.

⁷ Nickel Brothers, 2008, Waste Reduction Through House Moving

DECONSTRUCTION CASE STUDIES

Case Study – Riley Park

Unbuilders launched in 2018 and disassemble structures mostly by hand, diverting around 50 tonnes of building materials per house, from which 15 tonnes are salvaged for reuse.

Building type: Single-Family House
Square footage: 1,760
Location: City of Vancouver

This Vancouver house, built in 1910, was located in Riley Park at the City's highest point topographically. Unbuilders became involved with this home in 2018 when it was slated for demolition.

Unbuilders donated many of the materials to Habitat for Humanity, a non-profit organization. Some of the salvaged lumber was reused in the Welcome Parlour ice cream shop in North Vancouver.



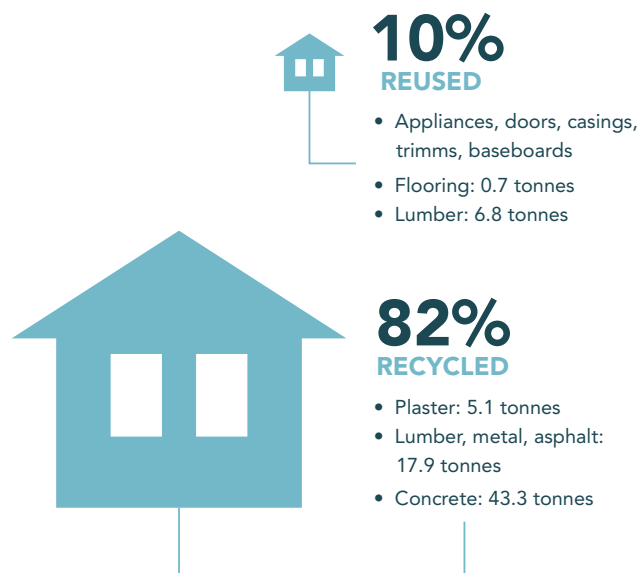
Character Home located on James Street
 CREDIT: UNBUILDERS



CREDIT: WELCOME PARLOUR

Total Waste Diversion

Approximately 92% of building materials were saved from disposal through reuse and recycling.



Cost Comparison

	DECONSTRUCTION	DEMOLITION
House removal	\$34,800	\$26,000
Tax credit – donation of salvaged material ⁸	-\$22,600	\$0
Total cost	\$12,200	\$26,000

⁸ Exact tax credit value based on income of person claiming the tax credit (typically 44-50%)

Case Study – Dunbar

Building type: Single-Family House
Square footage: 1,288
Location: City of Vancouver

This Vancouver house was originally built in 1930 in the Dunbar neighborhood. Unbuilders was hired to fully deconstruct this house in 2019.

Reclaimed lumber from this project was sold to Western Reclaimed and Heritage Lumber.

Recovered shiplap was sold to Woodshop Coop and was used as cladding in Parlour restaurant in Toronto, a refurbished 1894 piano factory.

Lumber sales helped the owner offset the overall cost of deconstruction, making it comparable to traditional demolition.

Total Waste Diversion

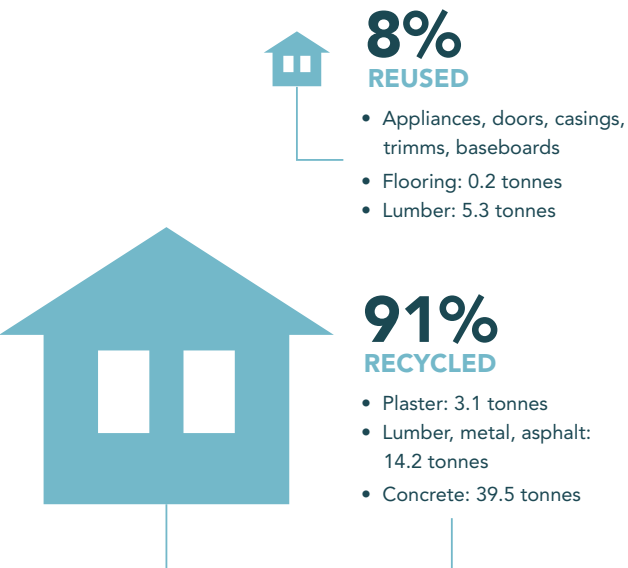
Approximately 99% of building materials were saved from disposal through reuse and recycling.



Character Home located in Dunbar
 CREDIT: UNBUILDERS



Parlour Restaurant
 CREDIT: WOODSHOP COOP



Cost Comparison

	DECONSTRUCTION	DEMOLITION
House removal	\$34,990	\$21,000 to \$27,000
Lumber sale	-\$6,000	\$0
Total cost	\$28,990	\$21,000 to \$27,000

HOME MOVING CASE STUDY

Case Study – Kerrisdale

Nickel Bros House Moving moves approximately 150 homes within the Pacific Northwest (Canada and U.S.) per year.

Building type: Single-Family House

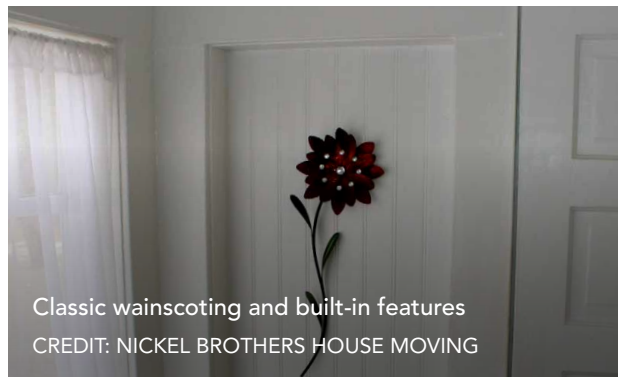
Square footage: 2,400

Location: City of Vancouver

This tudor-style home was built alongside its twin in 1931. Named the "Twin Dorothies," the homes were named after the wives' of the original developers. It was scheduled for demolition in 2013 to make room for two new 4,500 sq. ft. homes. Neighboring residents raised concerns with this choice and led to the developer to choose to relocate the buildings rather than demolishing them. The homes were moved to a new site, and the developer used the Heritage Revitalization Program to create a new project that used the Dorothies to build a new townhouse unit and garden suite below.



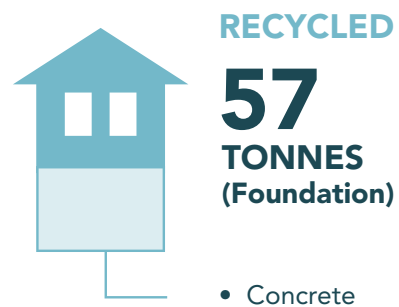
Character Home - City of Vancouver
CREDIT: NICKEL BROTHERS HOUSE MOVING



Classic wainscoting and built-in features
CREDIT: NICKEL BROTHERS HOUSE MOVING

Total Waste Diversion

A total of 111 tonnes of building materials were saved from disposal.

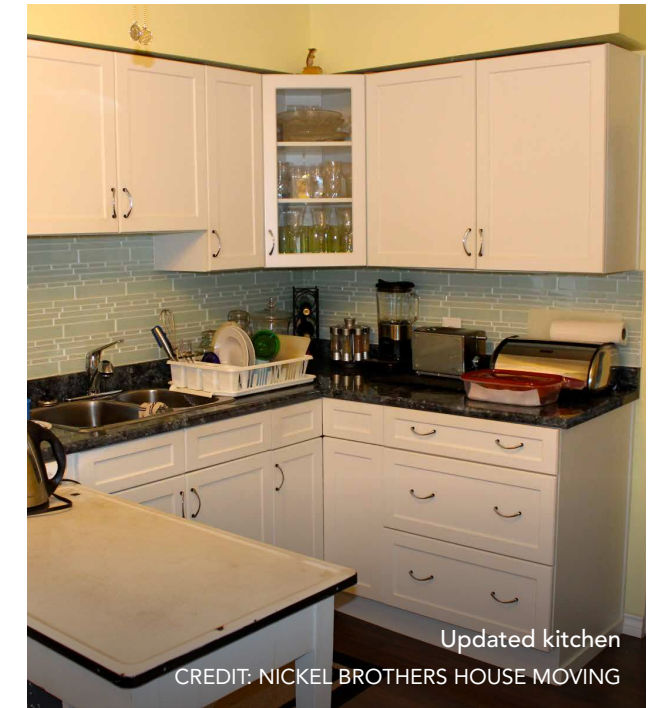


Cost Comparison

	HOUSE MOVING	DEMOLITION
House removal	\$5,000	\$18,050
Abatement	\$2,642	\$15,000
City of Vancouver waste compliance fee ⁹	\$350	\$350
Hauling fees	\$0	\$300
Total cost	\$7,992	\$33,700

New Construction Cost Savings

Cost	\$155,000 ¹⁰	\$220,000-\$550,000 ¹¹
Total savings	\$65,000 - \$395,000	



Updated kitchen
CREDIT: NICKEL BROTHERS HOUSE MOVING

⁹ City of Vancouver, Demolition Permit with Recycling Requirements

¹⁰ Cost to relocate this home onto property, build foundation / basement (unfinished, increasing home size to 2000 sq. ft.), set up utilities, etc. (not including purchase of lot)

¹¹ Cost to build new: \$200 - \$500 per sq. ft. x 1100 sq. ft. (not including purchase of lot)

Recycling

Source separated materials have a greater potential to be recycled when taken to a processing facility and associated fees are generally lower than mixed loads and disposal tipping fees. Identifying opportunities to source separate your unwanted construction materials early in the process could save you time and money.

Metro Vancouver bans the disposal of readily recyclable or operationally hazardous materials. The following building materials are banned from disposal at regional facilities, but can be dropped off for recycling at a number of private facilities in the region.

Where to take building materials for recycling?

See the [Directory](#) at the end of the toolkit for a list of local recycling depots and facilities in your area.

Call 604-RECYCLE (604-732-9253) for information on haulers that service your area.

MATERIAL	INCLUDES
Appliances (not suitable for reuse)	Dishwasher, laundry dryer, stove, washing machine, fridge.
Asphalt	Asphalt pavement
Bricks	Masonry walls, walkways, backyard installations
Carpet	Carpet, area rugs, and carpet underlay
Clean wood	Forming lumber Dimensional lumber Untreated, unpainted wood Pallets Some flooring and furniture
Concrete	Structural concrete, cinder blocks, washout from mixer trucks
Yard Trimmings	Existing vegetation: Shrubs, small trees, plants, and sod. Landclearing debris: Stumps, branches, yard waste.
Drywall	New gypsum wallboard cutoffs
Metal	Piping, aluminum siding, banding, wires, cable, rebar, window frames, studs, cabinets, and shelves
Paper	Cardboard from packaging, office paper, newspaper



GYPSUM RECYCLING PROGRAM

Residents can bring new gypsum cutoffs (date-stamped 1990 or newer) that have not been previously installed to any Metro Vancouver transfer station or the Vancouver Landfill for recycling. The program is limited to a maximum of 500 kg per load.

For more information go to [Metro Vancouver - Recycling New Gypsum](#).

CARPET RECYCLING

Residents and businesses can now drop off carpet at the Coquitlam Transfer Station for recycling.

Nylon carpet fibres can be recycled into products like car parts and electronic components.

For more information go to [Metro Vancouver - Carpet Recycling Rack Card](#).

DID YOU KNOW?

According to a study conducted by the University of British Columbia, placing a recycling station 1.5 metres away from a point of entry or exit can drastically boost recycling rates by 141%.

12 Alessandra DiGiacomo, Convenience improves composting and recycling rates in high-density residential buildings

How to set up a recycling and waste management program

This guide contains helpful tips when planning storage and transport of recyclable and discarded materials at your site.

DEVELOP A WASTE MANAGEMENT PLAN	CHOOSE A COLLECTION OPTION	CHOOSE A HAULING OPTION	ORGANIZE THE RECYCLING PROGRAM	MONITORING AND CONTINUOUS IMPROVEMENT
<p>The plan should identify type and quantity of materials generated on site, processors that will receive the materials, on-site procedures and responsibilities, and required documentation.</p> <p>Designate a leader who will be responsible for educating staff, setting up the site, and supervising recycling efforts to prevent contamination of recycling loads.</p> <p>Estimate Waste and Recyclables</p> <p>You can estimate the amount of waste materials generated based on the type and size of the building, using waste disposal records from similar previous projects or the Demolition Waste Generation Rates calculator.</p> <p>Dedicate an area for recycling and waste management based on your estimates.</p>	<p>Source separation</p> <p>Recyclable materials are separated on site and stored in separate bins or compartments and taken to a recycling facility. Source separated loads are typically charged lower tipping fees.</p> <p>Commingled collection</p> <p>Waste materials are collected in a single bin and taken to a recycling facility for sorting. Commingled loads are typically charged a higher tipping fee.</p> <p>Collection frequency</p> <p>For space-constrained sites, you can consider using smaller bins paired with more frequent collection.</p>	<p>Hauling services</p> <p>Hire a hauler to provide the bins, collection schedule, and services you require.</p> <p>Some haulers also offer live loading and on-site source separation of recyclable materials and reusable items.</p> <p>Self-haul</p> <p>Using company staff and trucks to collect and haul recyclables works best for smaller sites.</p>	<p>Recycling station layout</p> <p>You can reduce contamination by designating a recycling area next to garbage bins and making sorting recyclables easier. You may also want to consider the bins you need based on the waste generated during each phase.</p> <p>On-site recycling stations will also make tracking waste for your recycling compliance report more efficient.</p> <p>Signage</p> <p>Place large, weatherproof signs for all bins to clearly communicate the intended material.</p>	<p>Monitor Progress</p> <p>Monitor waste management activities on an ongoing basis to ensure materials are salvaged, recycled and disposed of as specified in the waste management plan.</p> <p>Evaluate your project</p> <p>Ask your demolition, deconstruction or salvage contractor to provide you with the following information to track the volumes and cost of your project:</p> <ul style="list-style-type: none"> - Type and quantity of materials salvaged, recycled and disposed. - The name and location of the recycling and disposal facilities. - Copies of receipts from recycling and disposal facilities and credits from material sales.



Onsite recycling station
CREDIT: ADISA HOMES AND SEA TO SKY REMOVAL

Where to take materials for disposal

The non-hazardous building materials that can't be reused or recycled are known as residuals and require proper disposal.

Visit the following links for information on facilities that take larger quantities of C&D materials for disposal in Metro Vancouver.

- [Ecowaste Landfill](#)
- [Vancouver Landfill](#)
- [Active Licensed Solid Waste Facilities Accepting C&D Waste](#)
 - [Metro Vancouver Licensed Solid Waste and Recyclable Material Facilities](#)
 - [GIS Map of the Regional Solid Waste System](#)



Onsite recycling station
CREDIT: ADISA HOMES AND SEA TO SKY REMOVAL

Bibliography

Delta Institute. (2018). Deconstruction & Building Material Reuse: A Tool for Local Governments & Economic Development Practitioners. Retrieved from <https://2ob80mdcn83q0w4fdbp1fvz2-wpengine.netdna-ssl.com/wp-content/uploads/2018/05/Deconstruction-Go-Guide-6-13-18-.pdf>

Metro Vancouver. (2019). 2018 Solid Waste Management Annual Summary. Retrieved from http://www.metrovancouver.org/services/solid-waste/SolidWastePublications/2018_Annual_Recycling_and_Solid_Waste_Management_Summary.pdf

TRI Environmental Consulting. (2018). 2018 Construction and Demolition Waste Composition Study. Retrieved from <http://www.metrovancouver.org/services/solid-waste/SolidWastePublications/2018ConstructionDemolitionWasteCompositionStudy.pdf>

City of Vancouver (2020). Demolition permit with recycling requirements. Retrieved from Demolition permit: <https://vancouver.ca/home-property-development/demolition-permit-with-recycling-requirements.aspx>

Alessandra DiGiacomo, et.al. (2017) Convenience improves composting and recycling rates in high-density residential buildings. Retrieved from <https://www.tandfonline.com/doi/full/10.1080/09640568.2017.1305332>

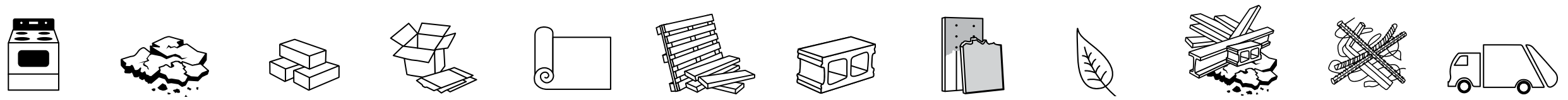
Directory

Recycling Depots & Facilities

Service Providers

Directory – Recycling Depots & Facilities

Please contact the facilities or processors to confirm they can properly handle the materials from your project. These local public and private facilities and recycling depots will only accept separated recyclable materials, unless indicated otherwise. For any questions about this list, broken links, or out-of-date information, please contact icentre@metrovancover.org.



	APPLIANCES (LARGE)	ASPHALT	BRICK	CARDBOARD	CARPET	CLEAN WOOD & PALLETS	CONCRETE	DRYWALL	YARD TRIMMINGS	MIXED C&D WASTE	SCRAP METAL	LOAD TYPE
BOWEN ISLAND												
Bowen Island Recycling Depot 1066 Mount Gardner Road 604-947-2255 bowenislandmunicipality.ca/recycling				✓							✓	Residential
BURNABY												
ABC Recycling 8081 Meadow Avenue 604-522-9727 abcrecycling.com	✓										✓	Both
Burnaby Eco-Centre 4855 Still Creek 1-855-701-7171 burnaby.ca/city-services/garbage---recycling/eco-centre.html	✓			✓		✓			✓		✓	Residential
Regional Recycling 2961 Norland Ave 604-276-8270 regionalrecycling.ca/burnaby-recycling-depot/	✓			✓							✓	Both

Table continues next page

	APPLIANCES (LARGE)	ASPHALT	BRICK	CARDBOARD	CARPET	CLEAN WOOD & PALLETS	CONCRETE	DRYWALL	YARD TRIMMINGS	MIXED C&D WASTE	SCRAP METAL	LOAD TYPE
COQUITLAM												
Coquitlam Transfer Station 1200 United Blvd 604-681-5600 metrovancover.org/services/solid-waste/garbage-recycling/transfer-stations/coquitlam-transfer-station	✓			✓	✓	✓		✓	✓		✓	Residential
Lafarge Canada - Aggregates Division 2300 Rogers Avenue 604-777-8019 www.lafargeholcim.com		✓					✓					Both
DELTA												
Canadian Mattress Recycling 140 – 715 Eaton Way 604-777-0324 canadianmattressrecycling.com	✓											Both
Vancouver Landfill 5400 72nd St 604-873-7000 vancouver.ca/home-property-development/landfill.aspx	✓ Limits apply	✓ Limits apply	✓ Residential only	✓ Limits apply		✓ Limits apply	✓ Limits apply	✓ Limits apply	✓ Check accepted material	✓ Check accepted material	✓	Both *Restrictions apply
Mikes Marine Services 3871 River Rd W 604-946-9747	✓										✓	Both
LANGLEY												
Cloverdale Fuel Ltd. 20408 - 102B Avenue 604-534-3711 cloverdalefuel.com						✓						Both
Eco-Agg Concrete Recycling 20494 – 102B Avenue 604-613-9080 recycleconcrete.ca		✓	✓				✓					Both

Table continues next page

	APPLIANCES (LARGE)	ASPHALT	BRICK	CARDBOARD	CARPET	CLEAN WOOD & PALLETS	CONCRETE	DRYWALL	YARD TRIMMINGS	MIXED C&D WASTE	SCRAP METAL	LOAD TYPE
LANGLEY												
Langley Transfer Station 1070 - 272nd Street, Aldergrove 604-856-3225 metrovancover.org/services/solid-waste/garbage-recycling/transfer-stations/langley-transfer-station	✓			✓		✓		✓	✓		✓	Residential
Macs Traders Inc. 22334 Fraser Hwy 604-533-4339	✓										✓	Both
The Pallet Factory 8910 256 Street 604-881-4741 thepalletfactory.ca						✓						Both
West Coast Metal Recycling 5771 Production Way 604-534-3531 westcoastmetalrecycling.com	✓										✓	Both
MAPLE RIDGE												
Fraser Valley Metal Exchange 23359-A Fishermans Road 604-467-7878 fvme.com	✓										✓	Both
Happywife 10481 276th Street 604-451-5155	✓										✓	Both
Maple Ridge Transfer Station 10092 - 236th Street 604-466-9277 metrovancover.org/services/solid-waste/garbage-recycling/transfer-stations/maple-ridge-transfer-station	✓			✓		✓		✓	✓		✓	Residential

Table continues next page

	APPLIANCES (LARGE)	ASPHALT	BRICK	CARDBOARD	CARPET	CLEAN WOOD & PALLETS	CONCRETE	DRYWALL	YARD TRIMMINGS	MIXED C&D WASTE	SCRAP METAL	LOAD TYPE
MAPLE RIDGE												
Ridge Meadows Recycling Society 10092 - 236th Street 604-463-5545 rmrecycling.org/	✓			✓								
NEW WESTMINSTER												
Ecowaste Industries 4 Spruce Street 604-276-9511 ecowastespruce.com/				✓	✓	✓		✓ Full sheets only		✓	✓	Commercial
New West Gypsum Recycling 38 Vulcan Street 604-520-6647 gypsumrecyclingbc.com								✓ Special requiremets				Both
NSD Disposal 440 Canfor Avenue 604-520-5669 nsddisposal.com						✓	✓	✓		✓	✓	Commercial
Urban Impact 5 Capilano Way 604-273-0089 urbanimpact.com				✓								
NORTH VANCOUVER												
B.A. Blacktop Ltd. No 6 Riverside Drive - Plant 604-929-7974 bablacktop.com		✓					✓ Clean only					
Emterra Environmental 132 Riverside Drive 604-929-7377 emterra.ca/				✓								Both

Table continues next page

	APPLIANCES (LARGE)	ASPHALT	BRICK	CARDBOARD	CARPET	CLEAN WOOD & PALLETS	CONCRETE	DRYWALL	YARD TRIMMINGS	MIXED C&D WASTE	SCRAP METAL	LOAD TYPE
NORTH VANCOUVER												
King Kubota Services 140 Mountain Highway 604-984-0902 superiorstoneslinger.com							✓			✓		Commercial
North Shore Transfer Station 30 Riverside Drive 604-929-5471 metrovancover.org/services/solid-waste/garbage-recycling/transfer-stations/north-shore-transfer-station	✓			✓		✓		✓	✓		✓	Residential
Waste Control Services 1493 Dominion Street 604-986-9777 wastecontrolservices.com/recycling-depot/red-bag-recycling/				✓								Commercial
PITT MEADOWS												
Augustine Soil & Mulch Ltd. 17949 Kennedy Road 604-465-5193 augustinegroup.ca/						✓			✓			Commercial
Meadows Landscape Supply 18020 Kennedy Rd 604-465-1311 landscapematerials.ca						✓			✓			Both
PORT COQUITLAM												
HSR Services (Happy Stan's Recycling) 1603 Langan Avenue 604-464-0242 happystan.com	✓			✓		✓					✓	Both

Table continues next page

	APPLIANCES (LARGE)	ASPHALT	BRICK	CARDBOARD	CARPET	CLEAN WOOD & PALLETS	CONCRETE	DRYWALL	YARD TRIMMINGS	MIXED C&D WASTE	SCRAP METAL	LOAD TYPE
RICHMOND												
Allied Salvage & Metals (1985) Ltd. 11651 Twigg Place (Mitchell Island) 604-322-6629 alliedsalvagemetals.ca											✓	Both
City of Richmond Recycling Depot 5555 Lynas Lane 604-276-4010 richmond.ca/services/recycling/recyclingdepot.htm	✓			✓					✓		✓	Residential
Ecowaste Industries 15111 Williams Rd 604-277-1410 ecowaste.com		✓	✓	✓	✓	✓	✓	✓ Full sheets only	✓	✓	✓	Both
Eagle Disposal Inc. 11611 Twigg Place 604-322-9191		✓	✓	✓	✓	✓	✓		✓	✓	✓	Both
Enviro Pallet Recovery 11595 Eburne Way 604-301-1084 enviropalletrecovery.net						✓ Pallets only						Both
GFL Environmental Inc. 15360 Knoxway 604-946-02-01 gflenv.com/				✓								Commercial
Hayer Demolition Ltd. 11571 Mitchell Road hayerdemolition.com						✓	✓					Commercial
Inner City Demolition 11640 Twigg Place (Mitchell Island) 604-327-0957		✓	✓	✓		✓	✓			✓	✓	Both

Table continues next page

	APPLIANCES (LARGE)	ASPHALT	BRICK	CARDBOARD	CARPET	CLEAN WOOD & PALLETS	CONCRETE	DRYWALL	YARD TRIMMINGS	MIXED C&D WASTE	SCRAP METAL	LOAD TYPE
RICHMOND												
Lafarge Canada - Aggregates Division 13340 Mitchell Road (Mitchell Island) 604-324-3591 lafargeholcim.com	✓ Clean only											Both
Lafarge Canada Inc. and Geocycle Canada Inc. 7611 No. 9 Road 604-244-4300 www.geocycle.com						✓ Clean only						Commercial
Lock-Block Ltd. 13171 Mitchell Road (Mitchell Island) 604-325-9161 www.lockblock.com							✓ Clean only					Both
Mainland Construction Material ULC 124500 No. 5 Road 604-271-2555 mainlandcm.com		✓ Clean only					✓ Clean only					Both
PAC Recycling 130-2351 No 6 Rd 604-314-2277 pacrecycling.ca					✓							Commercial
Regional Recycling 13300 Vulcan Way 604-276-8270 regionalrecycling.ca/richmond-recycling-depot/				✓							✓	Booth
Richmond Steel Recycling Ltd. 11760 Mitchell Road (Mitchell Island) 604-324-4656 richmondsteel.ca	✓										✓	Both
Richvan Holdings Ltd. 15300 River Road 604-270-8922 richvanholdings.com		✓					✓				✓	Both

Table continues next page

	APPLIANCES (LARGE)	ASPHALT	BRICK	CARDBOARD	CARPET	CLEAN WOOD & PALLETS	CONCRETE	DRYWALL	YARD TRIMMINGS	MIXED C&D WASTE	SCRAP METAL	LOAD TYPE
RICHMOND												
SOP International Recycling Inc. 110-5900 No 6 Rd 604-285-5268 soprecycle.ca					✓							Both
Southernstar Enterprises Inc. 8501 Ontario Street 604-285-3200 southernstar-enterprises-inc.business.site		✓	✓			✓	✓	✓	✓	✓	✓	Commercial
Waste-Away Disposal Services 11560 Twigg Place 604.322.5114		✓				✓	✓		✓	✓		Both
SURREY												
ABC Recycling, Surrey 19355 54th Ave Surrey, BC 604-514-9411 abcrecycling.com/locations-contact/metal-recycling-surrey	✓										✓	Both
Advance Lumber & Pallet 12184 Old Yale Rd 604-580-4918						✓						Commercial
Bright Sky Disposal Ltd. 12857 - 116 Avenue 778-395-8800		✓	✓						✓	✓	✓	Both
Cascades Recovery 12345 104th Ave 604-327-5272 recovery.cascades.com/en				✓								Commercial
Emterra Environmental 6362 148 Street 604-599-8151 www.emterra.ca				✓							✓ Residential customers only	Both

Table continues next page

	APPLIANCES (LARGE)	ASPHALT	BRICK	CARDBOARD	CARPET	CLEAN WOOD & PALLETS	CONCRETE	DRYWALL	YARD TRIMMINGS	MIXED C&D WASTE	SCRAP METAL	LOAD TYPE
SURREY												
Great West Disposal 7800 Anvil Way 604-597-9161 greatwestdisposal.com						✓			✓	✓		Both
Pacific Drywall Recycling 7800 Anvil Way 778-889-1409								✓				Both
Paramount Pallet 13120 76 Avenue 604-595-2718 paramountpallet.com						✓ Pallets only						Commercial
Regional Recycling Cloverdale 5534 176 St 1-855-701-7171 (Toll free) www.regionalrecycling.ca/ cloverdale-recycling-depot/	✓			✓							✓	Both
RDM Enterprises Group 10455 Timberland Rd. 604-530-6310 rdmenterprises.com		✓					✓					Both
Rypac Metal Recycling Ltd. 11849 Tannery Road 604-580-7471 rypacmetalrecycling.com	✓										✓	Both
Schnitzer Steel Canada, Ltd. 12195 Musqueam Drive 604-580-0251 schnitzersteel.com	✓										✓	Both

Table continues next page

	APPLIANCES (LARGE)	ASPHALT	BRICK	CARDBOARD	CARPET	CLEAN WOOD & PALLETS	CONCRETE	DRYWALL	YARD TRIMMINGS	MIXED C&D WASTE	SCRAP METAL	LOAD TYPE
SURREY												
Surrey Transfer Station 9770 192nd Street 604-513-2409 metrovancover.org/services/solid-waste/garbage-recycling/transfer-stations/surrey-transfer-station	✓			✓		✓		✓	✓		✓	Residential
Topco Pallet Recycling Ltd. Unit 8 - 10619 Timberland Road 604-582-2020 topcopallets.ca						✓ Pallets only						Both
VANCOUVER												
Capital Salvage 1919 Triumph Street 604-253-8481 capitalsalvage.ca	✓										✓	Both
Davis Trading and Supply Ltd. 1100 Grant Street 604-255-3111 davistrading.com	✓										✓	Both
Emterra Environmental 955 West Kent Avenue 604-327-7647 www.emterra.ca				✓								Both
Grandview Woodland Food Connection 1661 Napier St 604-718-5895 gwfoodconnection.com						✓ Cedar boards only						Residential
Lawnboy Enterprises Ltd. 8655 Cambie Street 604-322-8771 lawnboylandscape.com/page1.html	✓	✓	✓				✓					Both

Table continues next page

	APPLIANCES (LARGE)	ASPHALT	BRICK	CARDBOARD	CARPET	CLEAN WOOD & PALLETS	CONCRETE	DRYWALL	YARD TRIMMINGS	MIXED C&D WASTE	SCRAP METAL	LOAD TYPE
VANCOUVER												
North Star Metal Recycling 1170 Powell Street 604-254-2734 northstarmetalrecycling.com	✓										✓	Both
Pacific Metals Ltd. 8360 Ontario Street 604-327-1148 pacificmetals.ca	✓			✓							✓	Commercial
Recycling Alternative 449 Industrial Avenue 604-874-7283 recyclingalternative.com				✓	✓	✓					✓	Commercial
Regional Recycling 960 Evans Avenue 604-689-4722 www.regionalrecycling.ca/ vancouver-recycling-depot/	✓			✓							✓	Both
Revolution Resource Recovery Park 460 East Kent Avenue South 604-323-2753 aforceofnature.ca				✓		✓			✓	✓	✓	Commercial
Vancouver South Transfer Station 377 West Kent Avenue North 604-873-7000 vancouver.ca/home-property-development/transfer-station.aspx						✓ Limits apply			✓ Check accepted materials			Both *Restrictions apply
Vancouver Zero Waste Centre 8588 Yukon Street 604-873-7000 vancouver.ca/home-property-development/zero-waste-centre.aspx	✓ Limits apply			✓							✓	Residential

Directory – Service Providers

COMPANY	DECONSTRUCTION APPRAISER	DECONSTRUCTION SERVICES	SALVAGE SERVICES	STRUCTURAL/HOUSE MOVING	USED BUILDING MATERIALS STORE	RESIDENTIAL OR COMMERCIAL	COMMENTS
3R Demolition 5735 Beresford Street Burnaby 604-435-2555 3rdemolition.com		✓	✓			Both	
4W's Demo Ltd 110-12860 Clarke Pl Richmond 604-723-9155 4wsdemo.com	✓	✓	✓	✓		Both	
604-Trash-it 8866 Hudson St Vancouver 604-872-7448 604-trash-it.com		✓	✓			Both	
Able Auctions 19757 92A Avenue Langley 604-881-2253 ableauctions.ca					✓	Both	Inventory closeouts for all types of businesses including building materials. Provide pick up and drop off.
Allied Salvage & Metals (1985) Ltd. 11651 Twigg Place (Mitchell Island) Richmond 604-322-6629 alliedsalvagemetals.ca			✓			Both	
Ancore Appraisals Inc. 9124 Queen Street Langley 778-926-0136 ancorage.ca	✓					Both	Provides estimate value of salvaged building materials.

Table continues next page

COMPANY	DECONSTRUCTION APPRAISER	DECONSTRUCTION SERVICES	SALVAGE SERVICES	STRUCTURAL/HOUSE MOVING	USED BUILDING MATERIALS STORE	RESIDENTIAL OR COMMERCIAL	COMMENTS
Habitat ReStore Langley 20104 Logan Avenue Langley 604-514-1223 habitatgv.ca					✓	Both	Call first to organize pick up or drop off. Accept doors, windows, pressure and non-pressure treated wood, lumber/trim (Minimum of 6' long with no nails or paint).
Habitat ReStore North Vancouver 340 Lynn Ave North Vancouver www.habitatgv.ca					✓	Both	Call first to organize pick up or drop off. Accept doors, windows, pressure and non-pressure treated wood, lumber/trim (Minimum of 6' long with no nails or paint).
J&S Custom Furniture Co. Unit 43 – 1640 East Kent Ave. south Vancouver 778-317-3027 jsreclaimedwood.com			✓		✓ Reclaimed wood furniturec	Both	Accept wood from character building demolitions, old barns, industrial building tear-downs, unwanted pallets, and fallen logs.
Jindal Appliances Limited 9463 120 Street Delta 604-581-8199 jindalappliances.com			✓ Appliances Only		✓ Retail Store	Residential	Rebuild, resell and recycle used appliances.
Kare Environmental 9311 River Drive Richmond 604-232-9155 Ext 3 karegroupcanada.com		✓				Both	
Keep it Green Recycling Ltd. Port Coquitlam 604-341-6495 keepitgreenrecycling.ca/services/sustainable-lock-up/					✓	Both	To schedule a drop-off or pick up email contactus@keepitgreenrecycling.ca or fill online form. Drop-off charge a fee based on truck size. Variety of materials available, household and building. Not taking lumber.
Maple Ridge New & Used Building Materials 23332 River Road Maple Ridge 604-380-2111 mrnu.ca					✓	Both	Variety of materials available, household and building. Not taking lumber.

Table continues next page

COMPANY	DECONSTRUCTION APPRAISER	DECONSTRUCTION SERVICES	SALVAGE SERVICES	STRUCTURAL/HOUSE MOVING	USED BUILDING MATERIALS STORE	RESIDENTIAL OR COMMERCIAL	COMMENTS
Nickel Brothers House Moving Ltd 1528 Broadway St Port Coquitlam 1-866-813-9430 nickelbros.com				✓		Both	Call first to organize pick up or drop off. Accept doors, windows, pressure and non-pressure treated wood, lumber/trim (Minimum of 6' long with no nails or paint).
Octiscapes 2756 Woodland Dr Vancouver 604-708-5790 octiscapes.com		✓	✓			Both	
Pacific Blasting and Demolition 3183 Norland Avenue Burnaby pacificblasting.com/demolition/		✓	✓			Both	
Phoenix Enterprises Ltd. 19429 54th Ave Surrey 604-594-0224 phoenixenterprisesltd.com		✓			✓	Both	Also take asbestos and drywall. Call for details.
Salvage Vancouver Woodworks & Wood Market 1278 E Hastings St Vancouver 778-952-3969 salvagevancouver.com		✓	✓		✓ Reclaimed wood furniture	Both	Wood market once per month or by appointment.
Sea to Sky Removal Vancouver 604-836-9258 https://www.seatoskyremoval.ca/			✓			Both	Services construction sites in Vancouver, Burnaby, Richmond, Port Coquitlam, Coquitlam, Port Moody, Surrey, North Vancouver, West Vancouver, Lions Bay, Squamish and Whistler. Also offer live loading and on-site source separation of recyclable and reusable materials
Supreme House Movers Ltd. 25768 128th Avenue Maple Ridge 604-462-9885 supremehm.com				✓		Both	
Surrey New & Used Building Materials 17861 - 64th Avenue Surrey 604-576-8488 surreynewandused.com		✓			✓	Both	Call first for details. Variety of materials available, household and building. Not taking lumber.

Table continues next page

COMPANY	DECONSTRUCTION APPRAISER	DECONSTRUCTION SERVICES	SALVAGE SERVICES	STRUCTURAL/HOUSE MOVING	USED BUILDING MATERIALS STORE	RESIDENTIAL OR COMMERCIAL	COMMENTS
Maple Ridge New & Used 23332 River Road Maple Ridge 604-380-2111 mrnu.ca		✓			✓		Call first for details. Variety of materials available, household and building. Not taking lumber.
T&T Demolition #104 - 20119 113B Avenue Maple Ridge 604-465-7211 tandtdemolition.com		✓	✓				
The Barnhouse Company Unit 203-7426 Hedley Avenue Burnaby 778-231-0081 barnhouse.ca					✓	Both	Accept wood from barns and heritage homes. Call in advance to confirm acceptance of material.
Unbuilders 215-1610 Pandora St Vancouver unbuilders.com		✓	✓			Both	
Urban Repurpose 440 Brooksbank Ave North Vancouver 604-990-5576 urbanrepurpose.ca					✓	Both	Call first. Take donations of clean and old weathered wood, brick, and carpet. Drop offs, only during operation hours. Drop offs are limited by available space, or safety concerns. Pick-up service available.
Westcoast Wood Slabs 79 W 3rd Ave Vancouver 604-682-1611 chapelarts.com/showroom					✓ Reclaimed wood furniture	Both	Call first. May take donations of solid wood lumber, fencing.
Western Reclaimed Timber 26324 River Rd Maple Ridge 604-462-8845 westernreclaimed.com		✓	✓		✓	Commercial	Specializes in reclaimed timber and lumber.
Wood Shop Workers Coop 1245 Glen Drive Vancouver 778 899-5353 woodshop.coop					✓ Reclaimed wood furniture	Both	Call first. Accept solid wood lumber, fencing, demolition materials such as 2x4, 1x4, rounds, and milled slabs on a case by case basis. Don't take particle board, pegboard, laminate, or other made to look like wood materials.

