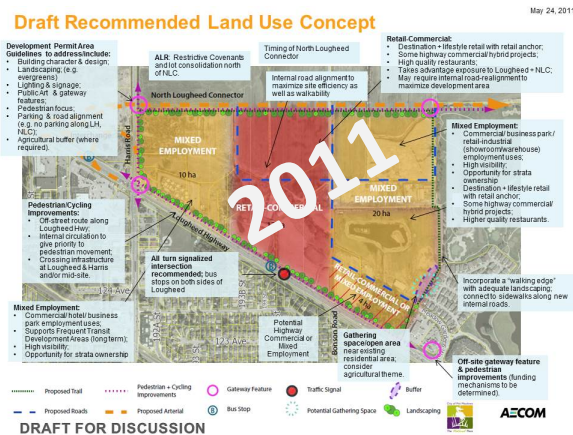


North Lougheed Study Area - Project Overview

The City is exploring options for new land uses on the north side of Lougheed Highway and we need your opinions and ideas.

What happened to the last plan?

- A land use concept for mixed employment and retail-commercial was prepared for the area in 2011:



- Market conditions have since changed and now there is very little demand for retail-commercial space.
- Agricultural Land Commission has issued conditional exclusion approvals for the entire area.

What benefits can come from developing the North Lougheed Study Area?

- ✓ More people will be able to live and work close to the new RapidBus service.
- ✓ Greater diversity of housing to respond to changing demographics.
- ✓ Future property taxes from the area will allow the City to provide more benefits and services to all residents.
- ✓ More space for viable local businesses and sustainable jobs that is walkable from residential areas.
- ✓ Funding for agricultural improvement projects.

For example, construction of the NLC will reduce the traffic congestion on Old Dewdney Trunk Rd., improving safety when farmers move their equipment and materials.

Consultation will happen at each phase of the project:

Learn about the site.

Create different land use plan options using what we learned.

Apply to Metro Vancouver for their approval.

Adopt the new land use plan & design guide into the City's Official Community Plan

Receive applications to build the NLC and a new part of the city.

2019

2020

2021-2022

Who do we want to talk to?

- You! Your neighbours, friends, teammates, and all interested Pitt Meadows residents;
- Katie First Nation members;
- Local business owners and employees;
- Affected property owners; and,
- Other government organizations

I SEE PITT MEADOWS 2040

What could the future look like for Pitt Meadows?

North Lougheed Study Area Community Engagement Phase 2

Fall 2019

Ways to join the conversation!

1 In Person at Community Engagement Pop-ups:

- Saturday, October 26, from 1-4pm at the Pitt Meadows Family Rec Centre (Lobby).
- Saturday, November 2, from 8-11am at the Pitt Meadows Athletic Park.
- Tuesday, November 5, from 3-7pm at the Pitt Meadows Family Rec Centre (Lobby).
- Saturday, November 16, from 8-11am at the Silver Bridge Parking Lot (Harris Rd. on south side of Alouette River).

2 Online at haveyoursaypittmeadows.ca

We've developed several draft land use concepts for the North Lougheed Study Area (NLSA) using information and ideas contributed by the community and other stakeholders. Now we need your help to refine the plan! The NLSA is located on the north side of the Lougheed Highway between Meadows Gardens Golf Course and Harris Road. The City is considering the future of this area and how it can provide long-term benefits to the entire community.

Info: pittmeadows.ca/NLSA
Input: haveyoursaypittmeadows.ca

City of Pitt Meadows THE Natural PLACE

What we have heard so far:

- Support for, and opposition to, development of the study area and the North Lougheed Connector (NLC),
- Ideas for a neighbourhood that includes:
 - A mix of housing options;
 - Greenspace for habitat and recreation;
 - Space for local jobs and businesses;
 - Post-secondary training;
 - Walkable, cyclable, and transit-oriented;
 - Civic amenities and services;
 - Is attractive and well-designed; and,
 - Sensitive to neighboring uses.