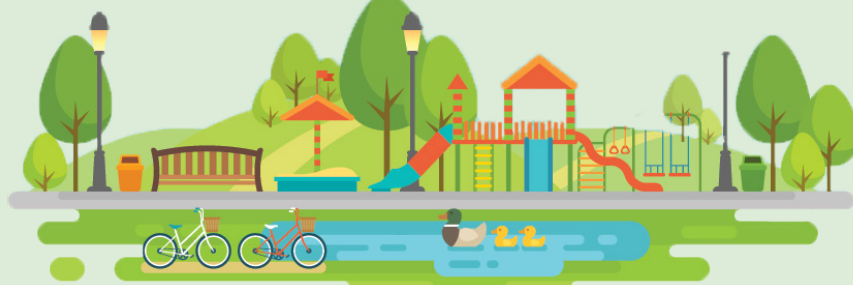


City of Pitt Meadows

# Park Amenity Donation Program



## Amenity Options



### Tree

Parks approved specimen tree.  
Donation Amount . . . . . \$1,000  
Life of the tree—guaranteed for 10 years.



### Park Bench

Powder-coated steel bench in black color,  
mounted on a concrete pad  
Donation Amount . . . . . \$2,500



### Picnic Table

46" square table, durable steel construction with  
rust-resistant, black powder-coated finish. Seats  
up to 8 people and also available in Wheelchair  
accessible model.  
Donation Amount . . . . . \$3,500



### Picnic Table

72" long solid durable concrete park style picnic  
table mounted on concrete pad also available in  
Wheelchair accessible model.  
Donation Amount . . . . . \$4,500



### Outdoor Foosball Table

Sealed concrete with heavy-duty chrome-plated  
steel rods and players.  
Donation Amount . . . . . \$6,500



### Outdoor Table Tennis Table

Sealed, green, concrete table tennis table with  
steel net.  
Donation Amount . . . . . \$11,000

## Program Details

The City of Pitt Meadows offers a variety of opportunities for citizens to participate in the enhancement of community spaces and programs through the donation of park amenities.

Contributions to the donation program enhance the beauty and enjoyment of the City's parks and open spaces. Any interested citizen, community group, business or visitor can donate a park amenity. Celebrate friends, family and important events with an inscribed plaque. Plaques will have a limited number of letters that can be accommodated and staff will work with donors on wording that is appropriate to a recreational setting, with a limit of one plaque per amenity.

Park Amenity Donations will be accepted on a case by case basis. Each proposed location will be reviewed by Parks staff to ensure suitability for operational considerations and long term plans for the area. In future maps of predetermined locations will be available for review on the City's website. Please note that the style or model of the amenity will be determined by the City and may change dependent on availability, suitability and vandal resistance.

The benches in this program are intended as temporary places of remembrance and celebration, and are in no way a permanent memorial.

An amenity donation is accepted on the basis that it will be maintained by the City for a ten year term. At the end term, the donor will be offered the opportunity to renew the term.

### For more information contact:

**City of Pitt Meadows | Parks and Operations**

604.465.2434

[parksandrec@pittmeadows.ca](mailto:parksandrec@pittmeadows.ca)

[pittmeadows.ca/parksandrec](http://pittmeadows.ca/parksandrec)